

Elderly Home Safety Checklist

16 May 2023 / Goodman Elderly Care Center /
Adela Agcang

Complete

Flagged items	8	Actions	0
Nursing Home	Goodman Elderly Care Center		
Address	Fisher, IL 61843, USA (40.3147554, -88.3500541)		
Safety Inspector	Adela Agcang		
Conducted on	16.05.2023 22:48 PST		

Flagged items

8 flagged

Elderly Home Safety Checklist / Entry to Elderly Home

Are stairs non-slip and in good repair?

No

Replace nonslip adhesives

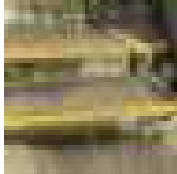


Photo 1

Elderly Home Safety Checklist / Entry to Elderly Home

Is there easy access for strollers and wheelchairs?

No

Maintain foliage to make way for strollers/wheelchairs on the entrance pathway

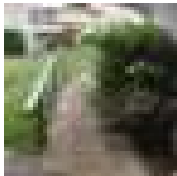


Photo 2

Elderly Home Safety Checklist / Internal Lighting

Is the level of light adequate in all areas?

No

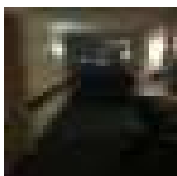


Photo 5

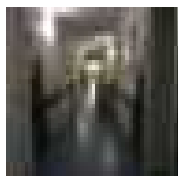


Photo 6

Elderly Home Safety Checklist / Elderly Home Emergency Precautions

Are evacuations practiced regularly as per legislation?

No

Perform evacuation drill after emergency preparedness training

Elderly Home Safety Checklist / Elderly Home Emergency Precautions

Have aged care workers completed emergency procedure training?

No

Schedule emergency preparedness training

Elderly Home Safety Checklist / First Aid Provision

Is the first-aider appointed and his/her name clearly

No

displayed?

Add sign to indicate "RN on duty is the contact person for first aid"

Elderly Home Safety Checklist / Restrooms

Are the toilets of proper height (and if not, is there a raised toilet seat available)?

No

No available raised toilet seat

Elderly Home Safety Checklist / Grounds

Are pathways around the facilities clear of trip hazards or overgrown foliage?

No



Photo 12

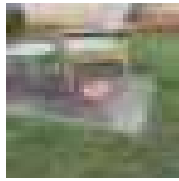


Photo 13

Elderly Home Safety Checklist

8 flagged

Entry to Elderly Home

2 flagged

Are stairs non-slip and in good repair?

No

Replace nonslip adhesives



Photo 1

Is the pathway leading to the elderly home clear and even?

Yes

Is there easy access for strollers and wheelchairs?

No

Maintain foliage to make way for strollers/wheelchairs on the entrance pathway

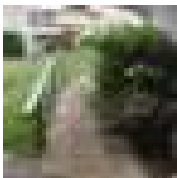


Photo 2

Are the handrails on both sides of the staircase in good working condition?

Yes

Is there adequate lighting leading to the elderly home entrance door?

Yes

Internal Floors

Is the floor even and not slippery (no leaks or potential to be slippery when wet)?

Yes

Are there no tripping hazards such as throw rugs, boxes, electrical cords, or rubbish?

Yes

Are the floors cleaned regularly and the spills cleaned up immediately?

Yes

Are aged care workers wearing appropriate non-slip footwear?

Yes

Hallways, Exits & Doors

Are hallways and doorways free of obstructions?

Yes

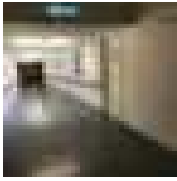


Photo 3

Do doors open freely and easily?

Yes

Do Fire Exits display correct notices and signages?

Yes

Are exit signs in place and illuminated?

Yes

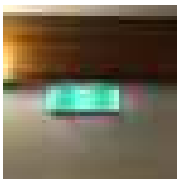


Photo 4

Do designated emergency exit doors open outwards?

Yes

Windows, Ventilation & Noise

Are windows in good condition (open easily with no broken or cracked glass or damaged screens)?

Yes

Is the temperature appropriate for the work area?

Yes

Are air conditioners serviced regularly (check maintenance records)?

Yes

Are noise levels acceptable?

Yes

Internal Lighting

1 flagged

Are the lights working (if damaged or not working), are they repaired immediately?

Yes

Is the level of light adequate in all areas?

No

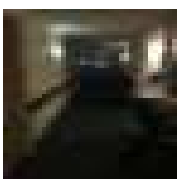


Photo 5

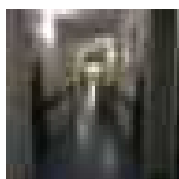


Photo 6

Are light fittings and light switches in good working and visual order and checked regularly? Yes

Is task lighting provided for detailed work? N/A

Electrical Equipment & Supply

Has electrical equipment been inspected and tested at specified intervals (check tags/records)? Yes

Is the electrical safety switch fitted to the elderly home? Yes

Is the safety switch tested regularly? Yes

Are electrical outlets and switches in good condition? Yes

Are there sufficient power outlets? N/A

Are extension leads/power boards used as designed (no double adaptors, or piggyback plugs)? Yes

Furniture, Fittings & Shelves

Is there adequate space to move around common areas? Yes

Is there sufficient individual storage space for the elderly? Yes

Do chairs enable the elderly to sit with their back upright and adjust to lumbar supports? Yes

Are chairs fully adjustable with a stable base? Yes

Elderly Home Emergency Precautions

2 flagged

Are overhead sprinklers and detectors clear of obstructions? Yes

Are appropriate fire extinguishers visible and easy to access? Yes

Are fire-fighting equipment checked regularly (check expiry dates on tags on extinguishers and hose reels)? Yes

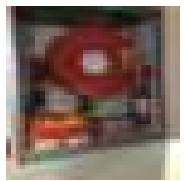


Photo 7

Is appropriate extinguisher signages in place and legible? Yes

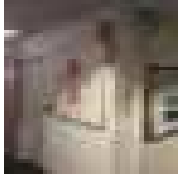


Photo 8

Are evacuation plans displayed on evacuation routes?

Yes

Are emergency telephone numbers clearly visible?

Yes

Are evacuations practiced regularly as per legislation?

No

Perform evacuation drill after emergency preparedness training

Have aged care workers completed emergency procedure training?

No

Schedule emergency preparedness training

Hazardous Chemicals

Is the current (within 5 years) safety data sheet kept with stored chemicals?

Yes

Are all chemical containers labeled correctly?

Yes

Are unused dispensed chemicals disposed of regularly in an appropriate manner?

Yes

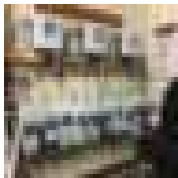


Photo 9

Are all hazardous chemicals in a secure & locked chemical cabinet?

Yes

First Aid Provision

1 flagged

Are first aid supplies checked regularly (check expiry dates, if replenished)?

Yes

Are the locations of first aid supplies clearly marked with a white cross on green background?

Yes

Do aged care workers know the location of the first aid kits and are easily accessible?

Yes

Is the first-aider appointed and his/her name clearly displayed?

No

Add sign to indicate "RN on duty is the contact person for first aid"

Restrooms

1 flagged

Are the toilets clean and well-ventilated?

Yes

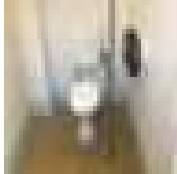


Photo 10

Is the non-slip bathroom floor surfaces in good condition?

Yes

Are hot and cold running water available?

Yes

Is soap (or soap dispensers) provided?

Yes

Are hand drying facilities available?

Yes

Are there adequate grab bars near the shower or bathtub?

Yes

Are the toilets of proper height (and if not, is there a raised toilet seat available)?

No

No available raised toilet seat

Kitchen Area

Is there suitable eating or coffee/tea break facilities?

Yes

Is the kitchen and amenities area kept clean?

Yes

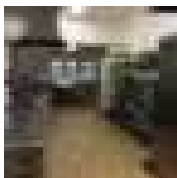


Photo 11

Are kitchen appliances and whitegoods clean and well-maintained?

Yes

Is there adequate storage available?

Yes

Is appropriate PPE worn when conducting required tasks?

Yes

Is the fire blanket installed and checked every 6 months?

Yes

Are the anti-slip floor surfaces in good condition?

Yes

Grounds

1 flagged

Is adequate external lighting installed for night time?

Yes

Are gardens well-maintained with branches and excess foliage removed?

Yes

Are the ground free of sharp objects?

Yes

Are pathways around the facilities clear of trip hazards or overgrown foliage?

No



Photo 12

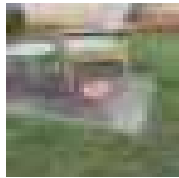


Photo 13

Are storage sheds tidy and secured?

Yes

Completion

Additional Comments

Let's use more SafetyCulture elderly home safety checklists to proactively prevent falls within our facility!

Nursing Home Safety Inspector Name & Signature



Adela Agcang
16.05.2023 22:53 PST

Media summary

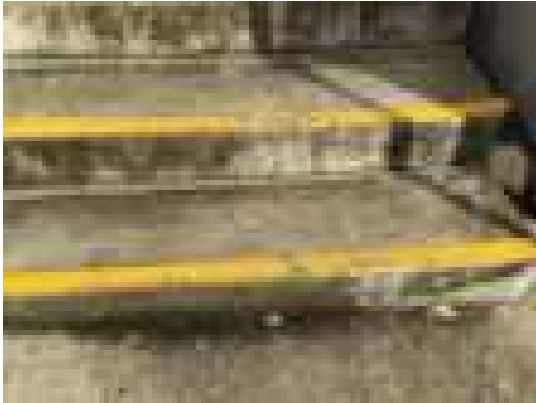


Photo 1



Photo 2



Photo 3

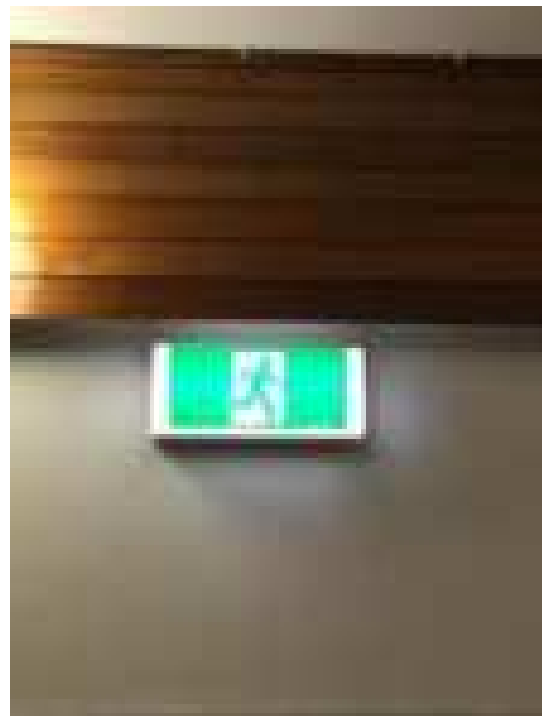


Photo 4



Photo 5



Photo 6



Photo 7

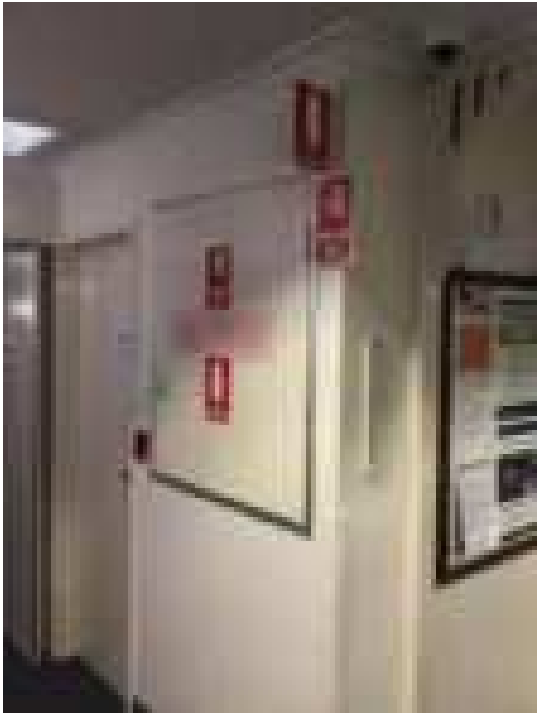


Photo 8



Photo 9



Photo 10



Photo 11



Photo 12



Photo 13