



# Electrical Safety Inspection Report

Avante Green Group / Marion Clemence / 3 Mar 2023

Complete

Score	<b>91.67%</b>	Flagged items	<b>3</b>	Actions	<b>0</b>
<b>Site conducted</b>					Unanswered
<b>Client / Site</b>					Avante Green Group
<b>Location</b>					7B Park Place West, Sunderland SR2 8HT, UK
<b>Conducted on</b>					03.03.2023 08:00 PST
<b>Competent Person</b>					Marion Clemence

**Flagged items**

3 flagged

Audit / Electrical Equipment

**Are electrical installations not in hazardous dust or vapor areas?**

No

Dusty computer found in the computer room



Photo 2

Audit / Electrical Equipment

**Are exposed wiring and cords with frayed or deteriorated insulation repaired or replaced promptly?**

No

These wires can cause electrical hazards like physical injuries to the people who will get in contact with them.

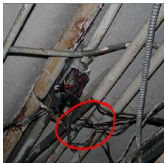


Photo 3



Photo 4

Audit / Electrical Equipment

**Are electrical enclosures such as switches, receptacles, junction boxes, etc., provided with tight-fitting covers or plates?**

No

No cover.

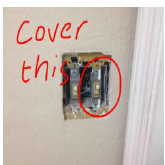


Photo 6

**Audit**

3 flagged, 91.67%

**Description of work**

Conducting electrical maintenance of a 5 floor building

## Electrical Equipment

3 flagged, 88.89%

**When electrical equipment or lines are to be serviced, maintained, or adjusted, are necessary switches opened, locked out or tagged, whenever possible?**

Yes

**Are portable electrical tools and equipment grounded or of the double insulated type?**

Yes

This is an example of a tool which is properly grounded and double insulated



Photo 1

**Are electrical appliances such as vacuum cleaners, polishers, vending machines, etc., grounded?**

Yes

**Do extension cords have a grounding conductor?**

Yes

**Are multiple plug adapters prohibited?**

Yes

**Are ground-fault circuit interrupters installed on each temporary 15 or 20 ampere, 120 volt alternating current (AC) circuit at locations where construction, demolition, modifications, alterations, or excavations are being performed?**

Yes

**Are all temporary circuits protected by suitable disconnecting switches or plug connectors at the junction with permanent wiring?**

Yes

**Are electrical installations not in hazardous dust or vapor areas?**

No

Dusty computer found in the computer room



Photo 2

**Are exposed wiring and cords with frayed or deteriorated insulation repaired or replaced promptly?**

No

These wires can cause electrical hazards like physical injuries to the people who will get in contact with them.



Photo 3



Photo 4

REFERENCE: Electrical wires in good working condition  
[This is an example of how you can use iAuditor to include best practice reference images in your templates to assist with inspections]



**Are flexible cords and cables free of splices or taps?**

Yes

**Are clamps or other securing means provided on flexible cords or cables at plugs, receptacles, tools, equipment, etc., and is the cord jacket securely held in place?**

Yes

**Are all cord, cable and raceway connections intact and secure?**

Yes

**In wet or damp locations, are electrical tools and equipment appropriate for the use or location or otherwise protected?**

N/A

**Is the location of electrical power lines and cables (overhead, underground, under floor, other side of walls, etc.) determined before digging, drilling, or similar work is begun?**

N/A

**Are metal measuring tapes, ropes, hand-lines or similar devices with metallic thread woven into the fabric prohibited where they could come in contact with energized parts of equipment or circuit conductors?**

Yes

**Is the use of metal ladders prohibited where the ladder or the**

Yes

person using the ladder could come in contact with energized parts of equipment, fixtures, or circuit conductors?

Are all disconnecting switches and circuit breakers labeled to indicate their use or equipment served?

Yes

This is great. Labelled.



Photo 5

Are disconnecting means always opened before fuses are replaced?

Yes

Do all interior wiring systems include provisions for grounding metal parts of electrical raceways, equipment and enclosures?

Yes

Are all electrical raceways and enclosures securely fastened in place?

Yes

Are all energized parts of electrical circuits and equipment guarded against accidental contact by approved cabinets or enclosures?

Yes

Is sufficient access and working space provided and maintained around all electrical equipment to permit ready and safe operations and maintenance?

Yes

Are all unused openings (including conduit knockouts) in electrical enclosures and fittings closed with appropriate covers, plugs, or plates?

Yes

Are electrical enclosures such as switches, receptacles, junction boxes, etc., provided with tight-fitting covers or plates?

No

No cover.

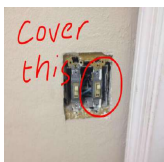


Photo 6

Are disconnecting switches for electrical motors in excess of two horsepower able to open the circuit when the motor is stalled without exploding? (Switches must be horsepower rated equal to or in excess of the motor rating.)

Yes

Is low voltage protection provided in the control device of motors driving machines or equipment that could cause injury from inadvertent starting?

Yes

Is each motor disconnecting switch or circuit breaker located within sight of the motor control device?

Yes

Is each motor located within sight of its controller or is the controller disconnecting means able to be locked open or is a separate disconnecting means installed in the circuit within sight of the motor?

Yes

Is the controller for each motor that exceeds two horsepower rated equal to or above the rating of the motor it serves?

Yes

## Employees

100%

Are all employees required to report any obvious hazard to life or property in connection with electrical equipment or lines as soon as possible?

Yes

Are employees instructed to make preliminary inspections and/or appropriate tests to determine conditions before starting work on electrical equipment or lines?

Yes

Are employees who regularly work on or around energized electrical equipment or lines instructed in cardiopulmonary resuscitation (CPR)?

Yes

Are employees prohibited from working alone on energized lines or equipment over 600 volts?

Yes

## Lockout Procedures

100%

Are proper lock-out, tag-out and testing completed to ensure the voltage is off before performing maintenance on electrical equipment?

Yes

Are multiple locking devices used when more than one person works on a piece of equipment so workers can all apply their own lock?

Yes

If there is a question about the safe operation of an electrical tool or piece of equipment, is it removed from service, tagged and repaired by a qualified technician?

Yes

Are there written lock-out procedures provided for anyone performing lock-out procedures, including contractors?

N/A

Is proper lock-out and tag-out equipment available that has only one key per lock?

N/A

Are authorized workers trained in proper lock-out procedures when performing maintenance on electrical equipment?

Yes

Do supervisors ensure proper lock-out procedures are followed?

Yes

## Overall Assessment and Recommendations

Overall assessment of the workplace

At Risk

Enter recommendations here

1. Electrical installations should be free from dusts and water.
2. Always check for worn out cables and wires.
3. All switches should have covers and plates.
4. Stay away from restricted area where electricians only have the access.
5. Always ask assistance from competent people if there are electrical hazards observed.

## Completion

Full Name and Signature of Inspector



Marion Clemence  
03.03.2023 08:35 PST



Appendix



Photo 1



Photo 2



Photo 3



Photo 4



Photo 5



Photo 6