



Fire Safety Risk Assessment

Nebula / Adelaide Building / 16 Jun 2023 / Dennis Stewart

Complete

Score	77.5%	Flagged items	8	Actions	0
-------	-------	---------------	---	---------	---

Site conducted

Unanswered

Company Name

Nebula

Premises Name

Adelaide Building

Address

253 Florida Ave, Fort Pierce, FL
34950, USA

Date of Assessment

16.06.2023 13:51 PST

Carried out by

Dennis Stewart

Position

Fire Safety Officer

Use of the Premises

Commercial Building

Inspection / Fire Hazard Identification (Sources of Ignition) / Hazard / Hazard 2

Are existing control measures suitable?

No



Photo 2

Inspection / Fire Hazard Identification (Sources of Ignition) / Hazard / Hazard 3

Are existing control measures suitable?

No

There isn't an existing control measure specifically for arson. Though systems like CCTV's could help, i recommend other control measures be implemented to reduce the probability of arson occurring.

Inspection / Evaluate, Remove, Reduce and Protect From Risk

Can everyone escape without assistance?

No

Asked the staff around the building if they knew where to go in case a fire incident occurs, they answered "Fire escape" which is good. However, when asked which fire escape, they had no clue.

Inspection / Evaluate, Remove, Reduce and Protect From Risk

Are escape routes free from obstruction and storage?

No

Storage room exit is blocked with all sorts of packages



Photo 5

Inspection / Evaluate, Remove, Reduce and Protect From Risk

Can everyone escape in a reasonable time?

No

Seems possible except for the people inside the storage room when a fire begins

Inspection / Evaluate, Remove, Reduce and Protect From Risk

Are housekeeping and general waste management adequate?

No

Inside the building looks good. The one outside needs work

Inspection / Evaluate, Remove, Reduce and Protect From Risk

Are measures adequate to prevent the incidents of arson?

No

There is no clear measure for arson yet.

Inspection / Record, Plan, Inform, Instruct and Train

Have you provided fire instruction and staff training?

No

There are still staff who have not yet been trained

Inspection

8 flagged, 77.5%

Take or Attach Photo of Premise



Photo 1

General Information

Provide occupancy details by answering fields below

Time in use during the week (e.g "5 times in a week")

6 times a week (Monday - Saturday)

Total Number of Staff

54

Average Number of People Present

52

Provide size details by answering fields below

Total Size of Premise (Sqm)

tbd

Number of Storeys

3

Number of Basements

1

Fire Hazard Identification (Sources of Ignition)

2 flagged, 66.67%

Hazard

2 flagged, 66.67%

Hazard 1

100%

Hazard Type (Sources of Ignition)

Naked Flames

Are existing control measures suitable?

Yes

Hazard 2

1 flagged, 50%

Hazard Type (Sources of Ignition)

Electrical Equipment

Are existing control measures suitable?

No

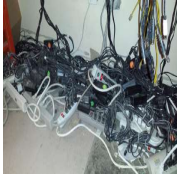


Photo 2

What needs to be done to make each situation safe?

Don't overload outlets or use extension cords in place of outlets. Call an electrician to install additional outlets as necessary.

Hazard 3

1 flagged, 50%

Hazard Type (Sources of Ignition)

Arson

Are existing control measures suitable?

No

There isn't an existing control measure specifically for arson. Though systems like CCTV's could help, i recommend other control measures be implemented to reduce the probability of arson occurring.

What needs to be done to make each situation safe?

- Report accumulated or abandoned refuse to your local council.
- Protect your commercial property. Seek advice on security, good lighting and CCTV will often acts as a deterrent to the criminal.
- Ask local fire protection team about arson in your area.
- Consider a thorough closedown procedure for your business by checking if 1) external & internal doors locked and closed; 2) no unauthorized personnel left on the premises; 3) no accumulation of waste or rubbish; and 4) alarms are switched on

Fire Hazard Identification (Sources of Fuel & Oxygen)

100%

Hazard

100%

Hazard 1

100%

Hazard Type

Wood / Paper / Cardboard

Are existing control measures suitable?

Yes

Hazard 2

100%

Hazard Type

Flammable Material (gases, liquids, paints, thinners, glues)

Are existing control measures suitable?

Yes

Flammable materials are stored and labelled properly



Photo 3

People at Risk

80%

Select type of people at risk and note your findings (if any)

Employees

Visitors / contractors

Lone workers, e.g. cleaners, security staff

People with disabilities

Evaluate, Remove, Reduce and Protect From Risk

5 flagged, 75%

Are ignition sources controlled to reduce the chances of fire?

Yes

Are combustible materials kept away from ignition sources?

Yes

Are all windows and openings closed last thing at night?

Yes

Is your fire alarm system adequate for your premises?

Yes

Will everybody be warned if the fire alarm operates?

Yes

Can everyone escape without assistance?

No

Asked the staff around the building if they knew where to go in case a fire incident occurs, they answered "Fire escape" which is good. However, when asked which fire escape, they had no clue.

Is escape from fire available in more than one direction?

Yes

Are all fire exits easily identified by the correct signs?

Yes

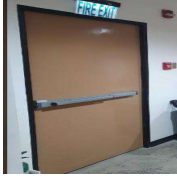


Photo 4

Are escape routes free from obstruction and storage?

No

Storage room exit is blocked with all sorts of packages



Photo 5

Are all doors on escape routes easily opened without a key?

Yes

Do all doors on escape routes open in the direction of escape?

Yes

Can everyone escape in a reasonable time?

No

Seems possible except for the people inside the storage room when a fire begins

Do you have emergency lighting?

Yes

Is the lighting adequate to illuminate circulation routes?

Yes

Do you have fire fighting equipment?

Yes

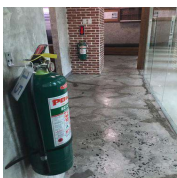


Photo 6

Is the fire fighting equipment adequate for the risks present?

Yes

Are housekeeping and general waste management adequate?

No

Inside the building looks good. The one outside needs work

Are security arrangements sufficient to prevent access?

Yes

Are measures adequate to prevent the incidents of arson?

No

There is no clear measure for arson yet.

Are there any large open roof spaces or concealed ceiling voids?

N/A

Could a fire in your premise spread to another?

N/A

cannot categorically confirm at the moment

Can the fire service easily get to your premises?

Yes

Record, Plan, Inform, Instruct and Train

1 flagged, 80%

Have you made an emergency plan?

Yes

Have you provided fire instruction and staff training?

No

There are still staff who have not yet been trained

Are there records of fire drills to test your training and emergency plan?

Yes

Are there records of maintenance on all fire safety measures?

Yes

Have you recorded the significant findings of this assessment?

Yes

Review

It is recommended that you review your fire safety risk assessment regularly (recommended every 12 months) OR if you make changes to the layout of your premises, any changes to work processes, significantly increase the amount of combustible materials stored or displayed or sources of ignition, change your opening hours (e.g. to include night time opening etc) or any failures in your fire safety precautions then you should review your fire safety risk assessment.

Date of next review

20.06.2024

Completion

Additional comment or recommendations

Organize a Fire Drill and have all staff participate. Put up fire safety evacuation plan around the premises. Evaluate the hazards identified (waste and arson) and plan out a safety measure and immediately implement for better safety of the people within the facility

Name & Signature of Assigned Employee



Dennis Stewart
21.06.2023 08:32 PST

Media summary



Photo 1



Photo 2



Photo 3



Photo 4



Photo 5



Photo 6