



LOLER Inspection Checklist

Constructr Solutions / Seraphim Santos / 16 May 2023

Complete

Flagged items	29	Actions	8
Site	Constructr Solutions		
Address	Manchester, NH, USA (42.9956397, -71.4547891)		
Inspected by	Seraphim Santos		
Conducted on	16.05.2023 23:12 PST		

Table of Contents

Flagged items & Actions	3
LOLER Inspection Checklist	8
Lifting Equipment	8
Equipment	8
Equipment 1	8
Equipment 2	8
Equipment 3	9
Regulation 3: Application	9
Suitability	9
Materials	9
Access	10
Slips, Trips & Falls	10
Operator Protection	10
High Winds	11
Regulation 4: Strengths & Stability	11
Strength	11
Stability	11
Overload	11
Regulation 6: Positioning & Installation	12
Regulation 7: Marking of Lifting Equipment	13
Regulation 8: Organization of Lifting Operations (lifting or lowering)	14
Visibility	16
Attaching/Detaching/Securing Loads	17
Environment	17
Location	17
Overturning	18
Proximity Hazards	18
Derating	18
Overload	18
Pre-use Check	19
Continuing Integrity	19
Regulation 9: Thorough Examination & Inspection	19
Regulation 10: Reports & Defects	20
Regulation 11: Keeping of Information	20

Signature

21

Media summary

22

Flagged items & Actions

29 flagged, 8 actions

Flagged items

29 flagged, 7 actions

LOLER Inspection Checklist / Regulation 3: Application / High Winds

If equipment/load can be affected by high winds, is it fitted with devices to detect dangerous situations that will enable measures to be taken to cease its use?

No

LOLER Inspection Checklist / Regulation 4: Strengths & Stability / Stability

Is the equipment of adequate stability for the job to be done?

No

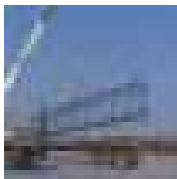


Photo 5

LOLER Inspection Checklist / Regulation 4: Strengths & Stability / Overload

If overturning/overloading is a significant risk, are rate capacity indicators or rated capacity limiters fitted to the equipment?

No

To Do | Priority Low | Due 02.06.2023 22:00 PST | Created by SafetyCulture Staff

Fit rate capacity indicators or rated capacity limiters to crane truck

LOLER Inspection Checklist / Regulation 6: Positioning & Installation

Is any load moving along a fixed path (e.g. hoist) protected by a suitable and substantial enclosure?

No

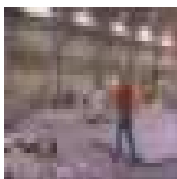


Photo 8

To Do | Priority High | Due 02.06.2023 22:30 PST | Created by SafetyCulture Staff

Plan and supervise lifting operations in this area

LOLER Inspection Checklist / Regulation 6: Positioning & Installation

Does the equipment have a travel or slewing motion to prevent trapping points or where not possible, controls to prevent access to these points?

No

To Do | Priority Medium | Due 02.06.2023 18:00 PST | Created by SafetyCulture Staff

Do lifting equipment refresher with single girder overhead crane

LOLER Inspection Checklist / Regulation 6: Positioning & Installation

In the event of a power failure, are there measures in place to prevent people from any resulting risks?

No

To Do | Priority Medium | Due 31.05.2023 23:21 PST | Created by SafetyCulture Staff

Create power failure control measures

LOLER Inspection Checklist / Regulation 6: Positioning & Installation

Are hooks of the type that reduces the risk of load-displacement fitted?

No

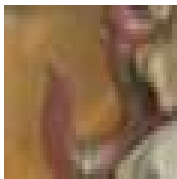


Photo 10

LOLER Inspection Checklist / Regulation 7: Marking of Lifting Equipment

Are accessories which can be separated from the equipment marked to indicate the equipment of which it is a part of?

No

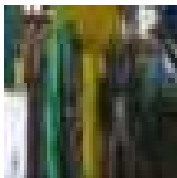


Photo 12

To Do | Assignee SafetyCulture Staff | Priority High | Due 29.05.2023 23:22 PST | Created by SafetyCulture Staff

Add SWL marking on these lifting accessories

LOLER Inspection Checklist / Regulation 8: Organization of Lifting Operations (lifting or lowering)

Are all lifting operations properly planned i.e. address the risks identified by the Risk Assessment?

No

LOLER Inspection Checklist / Regulation 8: Organization of Lifting Operations (lifting or lowering)

Are operations appropriately supervised?

No

LOLER Inspection Checklist / Regulation 8: Organization of Lifting Operations (lifting or lowering)

Are operations carried out in a safe manner?

No

LOLER Inspection Checklist / Regulation 8: Organization of Lifting Operations (lifting or lowering)

If persons need to work below a load, are safe systems of work established which minimizes the risks?

No

LOLER Inspection Checklist / Regulation 8: Organization of Lifting Operations (lifting or lowering)

If loads are left suspended, is access to the danger zone prevented?

No

LOLER Inspection Checklist / Regulation 8: Organization of Lifting Operations (lifting or lowering)

Is the suspended load secured?

No

LOLER Inspection Checklist / Regulation 8: Organization of Lifting Operations (lifting or lowering)

If persons have to work under a suspended load, are they aware of the risks and that the equipment has been thoroughly examined?

No

LOLER Inspection Checklist / Regulation 8: Organization of Lifting Operations (lifting or lowering)

If the risk cannot be controlled by layout organization, are other measures in place to minimize the consequences if the load falls?

No

LOLER Inspection Checklist / Regulation 8: Organization of Lifting Operations (lifting or lowering)

If these measures are not enough, have you provided a safe system of work to exclude people from the danger?

No

LOLER Inspection Checklist / Regulation 8: Organization of Lifting Operations (lifting or lowering) / Visibility

Are measures in place to prevent the load striking anything or a person?

No

LOLER Inspection Checklist / Regulation 8: Organization of Lifting Operations (lifting or lowering) / Attaching/Detaching/Securing Loads

Are lifting accessories used for securing the load compatible with the load?

No

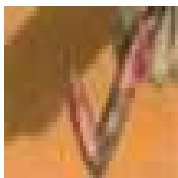


Photo 13

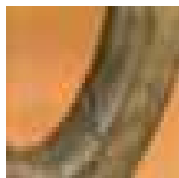


Photo 14

LOLER Inspection Checklist / Regulation 8: Organization of Lifting Operations (lifting or lowering) / Attaching/Detaching/Securing Loads

Are measures in place to prevent disintegration of the load?

No

LOLER Inspection Checklist / Regulation 8: Organization of Lifting Operations (lifting or lowering) / Overturning

Are measures and checks in place to prevent lifting equipment from tilting, overturning, moving inadvertently or slipping?

No

LOLER Inspection Checklist / Regulation 8: Organization of Lifting Operations (lifting or lowering) / Proximity Hazards

Is there an all round 6m exclusion zone where there is a likelihood of anyone being struck whilst working near the wheel tracks of an overhead crane?

No

LOLER Inspection Checklist / Regulation 8: Organization of Lifting Operations (lifting or lowering) / Proximity Hazards

Is there a safe system in place to keep people out of the danger zone?

No

To Do | Assignee SafetyCulture Staff | Priority Medium | Due 23.05.2023 23:25 PST | Created by SafetyCulture Staff

Develop a safe work system for danger zones

LOLER Inspection Checklist / Regulation 9: Thorough Examination & Inspection

Is your lifting equipment exposed to conditions causing deterioration likely to cause a dangerous situation?

Yes

LOLER Inspection Checklist / Regulation 9: Thorough Examination & Inspection

Is it inspected, where appropriate at suitable intervals between thorough examination?

No

We will now start using SafetyCulture for LOLER inspections

LOLER Inspection Checklist / Regulation 9: Thorough Examination & Inspection

Do you ensure that thorough examination takes place after long periods out of use?

No

LOLER Inspection Checklist / Regulation 9: Thorough Examination & Inspection

Is a thorough examination undertaken after substantial or significant modification, repair or when reconfigured?

No

LOLER Inspection Checklist / Regulation 11: Keeping of Information

Do you keep available for inspection all thorough examination reports of lifting equipment where if it is exposed to conditions causing deterioration it could result in dangerous situations?

No

LOLER Inspection Checklist / Regulation 11: Keeping of Information

Do you periodically review the inspection and thorough examination reports as part of the management arrangements for controlling the lifting equipment?

No

To Do | Assignee SafetyCulture Staff | Priority Low | Due 02.06.2023 23:27 PST | Created by SafetyCulture Staff

Schedule the review of LOLER inspection reports

Other actions

1 action

LOLER Inspection Checklist / Regulation 9: Thorough Examination & Inspection

Is it thoroughly examined every 6 months (if lifting equipment/accessories are for lifting people)?

Yes

To Do | Assignee SafetyCulture Staff | Priority Low | Due 26.05.2023 23:25 PST | Created by SafetyCulture Staff

Schedule thorough examination every 6 months using SafetyCulture

Lifting Equipment

Equipment

Equipment 1

Make & Model

Crane Truck X5

Serial Number

LE-4235

Equipment Description (with details of location, department, etc.)

Used for lifting metal walkways outdoors

Is equipment specifically designed for lifting people?

No

Has the machine been fitted with a suitably designed and secured carrier/working platform?

Yes

Is it clearly marked that it is not for lifting persons?

Yes

Is the control position manned at all times?

Yes

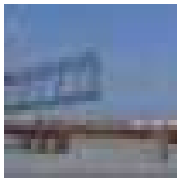


Photo 1

Equipment 2

Make & Model

Warehouse Gantry Crane Pro

Serial Number

LE-2197

Equipment Description (with details of location, department, etc.)

Used for lifting big loads inside the factory

Is equipment specifically designed for lifting people?

No

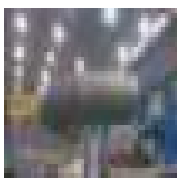


Photo 2

Has the machine been fitted with a suitably designed and secured carrier/working platform?	Yes
Is it clearly marked that it is not for lifting persons?	Yes
Is the control position manned at all times?	Yes

Equipment 3

Make & Model	Single Girder Overhead Crane XP
Serial Number	LE-3691

Equipment Description (with details of location, department, etc.)

Used for lifting small loads inside the factory

Is equipment specifically designed for lifting people?	No
Has the machine been fitted with a suitably designed and secured carrier/working platform?	Yes

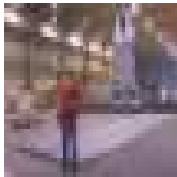


Photo 3

Is it clearly marked that it is not for lifting persons?	Yes
Is the control position manned at all times?	Yes

Regulation 3: Application

1 flagged

Suitability

Is the design compatible with human dimensions?	Yes
Has a PUWER risk assessment been completed?	N/A
Is the equipment suitable for the task?	Yes

Materials

Is the equipment material suitable for the conditions it is to	Yes
---	-----

be used in?

How often is the equipment used?

Every day

What is the nature and characteristics of the load to be lifted?

Walkways, pipes, bars

Access

Is it safe and suitable?

Yes

Can safe access be achieved to maintain, repair, inspect, dismantle?

Yes

Is access permanent (preferably, it should be)?

Yes

Slips, Trips & Falls

Are slips, trips, falls minimized if a person is required to be present on the equipment?

Yes

Is the working place of adequate size and strength for people and any items required?

Yes

Are openings on the floor adequately covered or fenced?

Yes

Is edge protection provided at fall areas exceeding 2m?

N/A

At fall areas below 2m, where factors would increase the likelihood of a fall/serious injury, is edge protection provided?

N/A

Is edge protection suitable and securely fixed?

N/A

Do gates/barriers on edge protection open inwards or is there another safe method?

N/A

Is edge protection provided where there is a risk of an object falling from a workplace on the equipment onto a person below?

N/A

Operator Protection

Is the operator adequately protected against the environment?

Yes

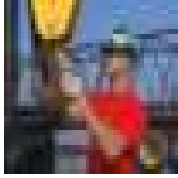


Photo 4

High Winds

1 flagged

If equipment/load can be affected by high winds, is it fitted with devices to detect dangerous situations that will enable measures to be taken to cease its use?

No

Regulation 4: Strengths & Stability

2 flagged, 1 action

Strength

Does the equipment have adequate strength for the job to be done?

Yes

Does the equipment have an appropriate factor of safety against failure under foreseeable modes (e.g. fracture, wear, fatigue)?

Yes

Stability

1 flagged

Is the equipment of adequate stability for the job to be done?

No

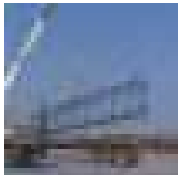


Photo 5

Do you need to take measures to resist overturning?

Yes

If stabilizing arrangements are a part of the equipment, are they in place and operating effectively before the equipment is used?

N/A

Is the equipment that is mobile, dismantled/reassembled, stable before use?

Yes

Overload

1 flagged, 1 action

If overturning/overloading is a significant risk, are rate capacity indicators or rated capacity limiters fitted to the equipment?

No

To Do | Priority Low | Due 02.06.2023 22:00 PST | Created by SafetyCulture Staff

Fit rate capacity indicators or rated capacity limiters to crane truck

Are lifting points on loads of suitable strength?

Yes

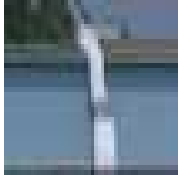


Photo 6

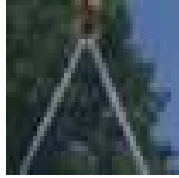


Photo 7

Regulation 6: Positioning & Installation

4 flagged, 3 actions

Is the equipment positioned or installed to minimize the need to lift loads over people and minimize the risk of injury to persons?

Yes

Is any load moving along a fixed path (e.g. hoist) protected by a suitable and substantial enclosure?

No



Photo 8

To Do | Priority High | Due 02.06.2023 22:30 PST | Created by SafetyCulture Staff

Plan and supervise lifting operations in this area

Is the maximum height of travel for a load moving along a fixed path below 2m?

Yes

Is a means of protecting people from the underside of that equipment or its attachments in place (e.g. barrier, gate)?

N/A

Does the equipment have a travel or slewing motion to prevent trapping points or where not possible, controls to prevent access to these points?

No

To Do | Priority Medium | Due 02.06.2023 18:00 PST | Created by SafetyCulture Staff

Do lifting equipment refresher with single girder overhead crane

Is access to and from the equipment sufficient and does it protect people from dropping loads?

Yes

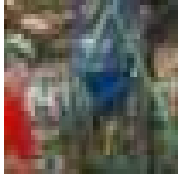


Photo 9

Are uncontrolled movements of a freely suspended load prevented?

Yes

Are runway beams level and of sufficient stiffness to prevent drifting/running away?

Yes

Is the equipment fitted with suitable devices to minimize uncontrolled freefall of loads?

Yes

In the event of a power failure, are there measures in place to prevent people from any resulting risks?

No

To Do | Priority Medium | Due 31.05.2023 23:21 PST | Created by SafetyCulture Staff

Create power failure control measures

Are hooks of the type that reduces the risk of load-displacement fitted?

No

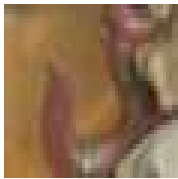


Photo 10

If 2 or more items of equipment are being used, will collisions of loads and equipment be avoided?

N/A

Is there an adequate interlocked gate or similar device fitted and of suitable height to prevent falls down a shaft or hoistway, or, are other arrangements in place?

N/A

Is the gate or enclosure at least 2m high?

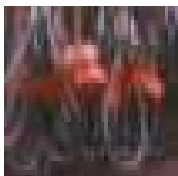
N/A

Regulation 7: Marking of Lifting Equipment

1 flagged, 1 action

Is the machine and accessories for lifting clearly marked with the safe working load (SWL)?

Yes



If the machine is dependant on configuration or operating radius, is...

it clearly marked with SWL for each configuration.

Are accessories which can be separated from the equipment marked to indicate the equipment of which it is a part of?

No

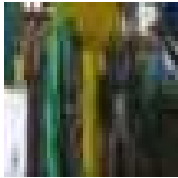


Photo 12

To Do | Assignee SafetyCulture Staff | Priority High | Due 29.05.2023 23:22 PST | Created by SafetyCulture Staff

Add SWL marking on these lifting accessories

If a number of lifting accessories are assembled to form one lifting accessory and is not dismantled after use, is it marked to indicate its safety characteristics?

Yes

If the weight of any accessory is significant in relation to its SWL, is the accessory clearly marked with its weight?

Yes

If other characteristics or weight might make the use of the accessory unsuitable for any other piece of equipment, is this clearly marked on the accessory or is the information given to the user?

Yes

Are lifting accessories with only one SWL marked with that value or is there a color-coding system in place?

Yes

If an accessory configuration can affect the SWL is it clearly marked or is the user-provided with information?

Yes

Regulation 8: Organization of Lifting Operations (lifting or lowering)

15 flagged, 1 action

Are all lifting operations properly planned i.e. address the risks identified by the Risk Assessment?

No

Are operations appropriately supervised?

No

Are operations carried out in a safe manner?

No

Is the load being lifted by 2 or more lifting equipment simultaneously?

N/A

Is suitable work equipment provided for the task?

Yes

If persons need to work below a load, are safe systems of work established which minimizes the risks?	No
If loads are left suspended, is access to the danger zone prevented?	No
Is the suspended load secured?	No
If persons have to work under a suspended load, are they aware of the risks and that the equipment has been thoroughly examined?	No
If the risk cannot be controlled by layout organization, are other measures in place to minimize the consequences if the load falls?	No
If these measures are not enough, have you provided a safe system of work to exclude people from the danger?	No
Do you need guidance for planning lifting operations?	Yes

LOLER Paragraphs 221-225

Planning individual lifting operations

221 For routine lifting operations the planning of each individual lifting operation will usually be a matter for the people using the lifting equipment, such as a slinger, the forklift truck operator etc. The person carrying out this part of the planning exercise should have appropriate knowledge and experience and the organisation should have a simple plan, generic risk assessment and procedures in place to support them.

222 An example of a simple plan for routine use of an overhead travelling crane would be:

- (a) assess the weight and size of the load;
- (b) choose the right accessory for lifting, eg depending upon the nature and weight of the load and the environment in which it is to be used;
- (c) check the anticipated path of the load to make sure that it is not obstructed;
- (d) prepare a suitable plan to set down the load;
- (e) fit the sling to the load using an appropriate method of slinging;
- (f) make the lift (a trial lift may be necessary to confirm the centre of gravity of the load; tag lines may be necessary to stop the load swinging);
- (g) release the slings (boards or similar may be necessary to prevent trapping of the sling); and
- (h) clear up.

223 The same principles could be applied to other routine lifting operations involving other types of lifting equipment, eg forklift truck, use of an electric hoist etc.

224 For routine similar lifting operations you may have a standard plan, but you should review it periodically to make sure that nothing has changed and the 'plan' remains valid. Examples of lifting equipment generally provided for routine lifting operations include:

- (a) forklift trucks in a warehouse;
- (b) a construction site hoist;
- (c) a MENP used for general maintenance;
- (d) a suspended crane used for window cleaning;
- (e) a vehicle hoist; and
- (f) a patient hoist.

225 For complex or non-routine lifting operations you should plan the task each time it is carried out.

Visibility

1 flagged

If the driver cannot observe the full path of the load, is there a banksman to guide the operator?

Yes

Are the signals or verbal communication used consistent with the code of signals in Schedule 1 of the Health and Safety (Safety Signs and Signals) Regulations 1996?

Yes

Are measures in place to prevent the load striking anything or a person?

No

Attaching/Detaching/Securing Loads

2 flagged

Are lifting accessories used for securing the load compatible with the load?

No

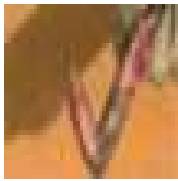


Photo 13



Photo 14

Are measures in place to prevent disintegration of the load?

No

If ropes, chains, slings are shortened, is it done in a safe manner?

Yes

After attaching or detaching a load, does the operator wait for authorization before commencing to lift?

Yes

Is the load handler competent to select suitable lifting accessories?

Yes

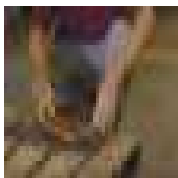


Photo 15

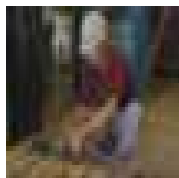


Photo 16

Environment

When the integrity of the lifting equipment could be affected by meteorological condition, do you halt its use?

Yes

Do you have a system of work that sets out measures required for particular weather conditions?

Yes

If weather conditions have affected the lifting equipment and are likely to jeopardize its safety, has a thorough examination been undertaken?

Yes

Location

Is there sufficient headroom to access/egress the site and to safely position and install the equipment?

Yes

Overturning

1 flagged

Are measures and checks in place to prevent lifting equipment from tilting, overturning, moving inadvertently or slipping?

No

Is dragging of loads banned when it is liable to cause damage or overturning?

Yes

Can the operator of the lifting equipment judge the weight of the load they will be lifting?

Yes

Proximity Hazards

2 flagged, 1 action

Are measures in place to minimize the risk from lifting equipment due to its proximity to other objects (e.g. excavations, overhead hazards, underground services, structures)?

Yes

Is there an all round 6m exclusion zone where there is a likelihood of anyone being struck whilst working near the wheel tracks of an overhead crane?

No

Is there a safe system in place to keep people out of the danger zone?

No

To Do | Assignee SafetyCulture Staff | Priority Medium | Due 23.05.2023 23:25 PST | Created by SafetyCulture Staff

Develop a safe work system for danger zones

Derating

Is the lifting equipment derated when necessary to take into account the environment and mode of use?

Yes

Overload

Is the load more than the safe working load?

No

If the weight of the load is unknown and may be approaching the maximum weight the equipment can handle, do you ensure that it is not lifted until the weight is determined?

N/A

Do you ensure the area around the lifting equipment is clear when performing an overload test?

Yes

Are essential workers only retained to lift the load during an

Yes

overload test?

Is the test completed as efficiently as possible?

Yes

Pre-use Check

Have the people using lift equipment received appropriate training, information and instruction on how to carry out pre-use checks?

Yes

Are pre-use checks undertaken before lifting equipment is used each working day/shift?

Yes

Is appropriate action taken to rectify any defects?

Yes

Continuing Integrity

Are all lifting accessories stored in conditions that do not lead to damage or deterioration?

Yes

Are suitable storage facilities provided for lifting accessories?

Yes

Regulation 9: Thorough Examination & Inspection

4 flagged, 1 action

Has lifting equipment been thoroughly examined before putting into service for the first time?

Yes

Have you received an EC Declaration of Conformity which is not over 12 months old?

Yes

Did you obtain the lifting equipment from another company?

N/A

Does the lifting equipment depend on installation conditions?

N/A

Is your lifting equipment exposed to conditions causing deterioration likely to cause a dangerous situation?

Yes

Is it thoroughly examined every 6 months (if lifting equipment/accessories are for lifting people)?

Yes

To Do | Assignee SafetyCulture Staff | Priority Low | Due 26.05.2023 23:25 PST | Created by SafetyCulture Staff

Schedule thorough examination every 6 months using SafetyCulture

Is it thoroughly examined every 12 months (for other equipment)?

Yes

Is it thoroughly examined every time exceptional

Yes

circumstances occur that would jeopardize any lifting equipment?

Is it inspected, where appropriate at suitable intervals between thorough examination?

No

We will now start using SafetyCulture for LOLER inspections

Do you ensure that thorough examination takes place after the lifting equipment is involved in an accident or dangerous occurrence?

Yes

Do you ensure that thorough examination takes place after a significant change in condition?

Yes

Do you ensure that thorough examination takes place after long periods out of use?

No

Is a thorough examination undertaken after substantial or significant modification, repair or when reconfigured?

No

Do you ensure that all lifting equipment that is used outside its normal place of work or equipment received from another organization or is given to another organization is accompanied by physical evidence of the last thorough examination report?

Yes

Does the risk assessment identify significant risk to the operator or other workers?

N/A

Regulation 10: Reports & Defects

Where there is an equipment or accessory defect involving existing or imminent risk or serious injury because of the failure of the equipment, do you send a copy of the report, as soon as possible, to the Health and Safety Executive?

Yes

Will automatically send a copy of this after digitally signing it

Do you notify the person controlling the equipment's use of any defect which could become dangerous to a person?

Yes

Do you make a written record of the inspection?

Yes

Do you ensure that if you have been notified of any defect, you do not use the equipment before it is rectified?

Yes

Do you ensure that where a defect has not yet but could become a danger to persons, the equipment is not used before the defect is rectified?

Yes

Regulation 11: Keeping of Information

2 flagged, 1 action

Have you kept the EC Declaration of Conformity for equipment obtained after 5 December 1998?

Yes

Do you keep available for inspection thorough examination reports done for lifting equipment until you cease to use the equipment?

Yes

Do you keep available for inspection all thorough examination reports done for lifting accessories for 2 years after the report is made?

Yes

Do you keep available for inspection all thorough examination reports of lifting equipment where its safety is dependant on installation conditions?

N/A

Do you keep available for inspection all thorough examination reports of lifting equipment where if it is exposed to conditions causing deterioration it could result in dangerous situations?

No

Do you periodically review the inspection and thorough examination reports as part of the management arrangements for controlling the lifting equipment?

No

To Do | Assignee SafetyCulture Staff | Priority Low | Due 02.06.2023 23:27 PST | Created by SafetyCulture Staff

Schedule the review of LOLER inspection reports

Signature

Overall Recommendations

We need to supervise our lifting operations more and using digital checklists on our mobile devices can help us achieve that. Keep track of corrective actions in the SafetyCulture analytics dashboard to monitor defects to be rectified, safe system of work plans, etc.

Evaluator's Name & Signature



Seraphim Santos
16.05.2023 23:28 PST

Media summary



Photo 1

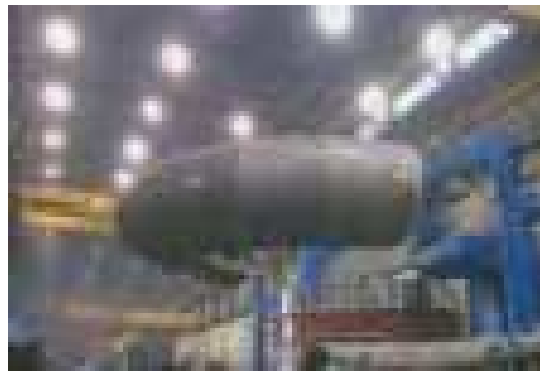


Photo 2

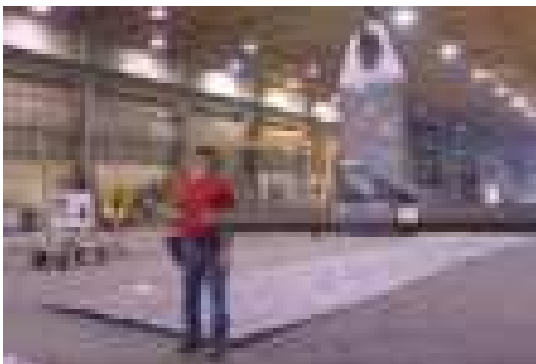


Photo 3

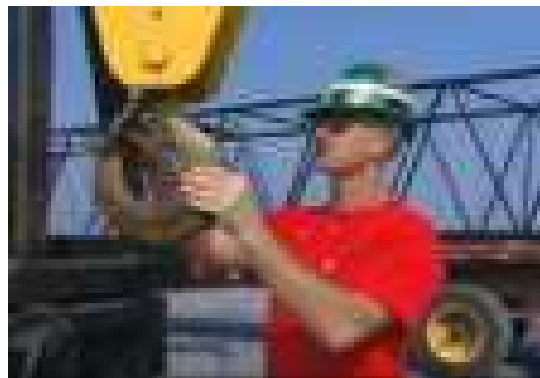


Photo 4



Photo 5

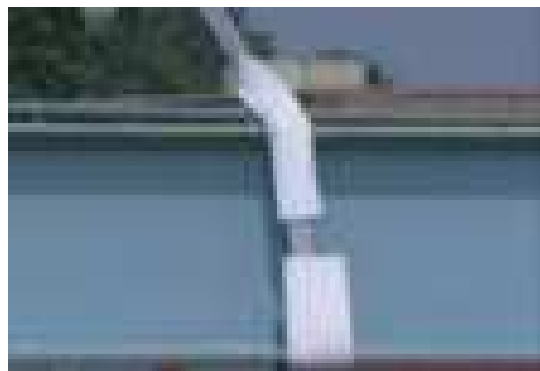


Photo 6



Photo 7

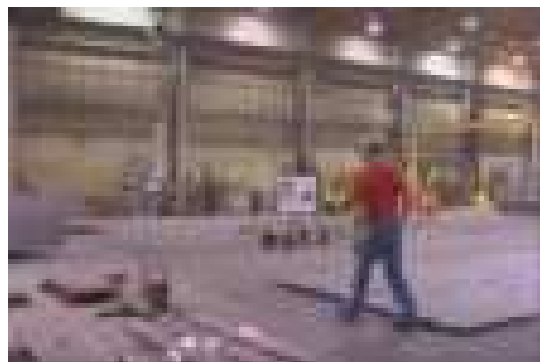


Photo 8



Photo 9



Photo 10



Photo 11

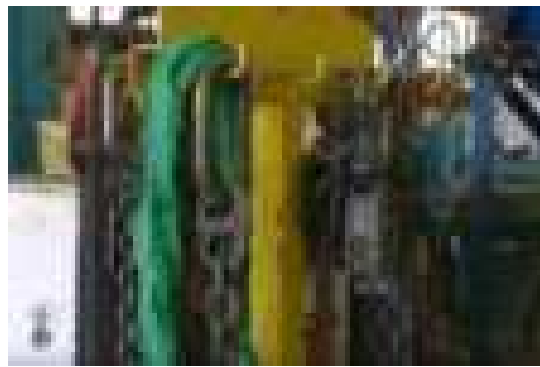


Photo 12



Photo 13

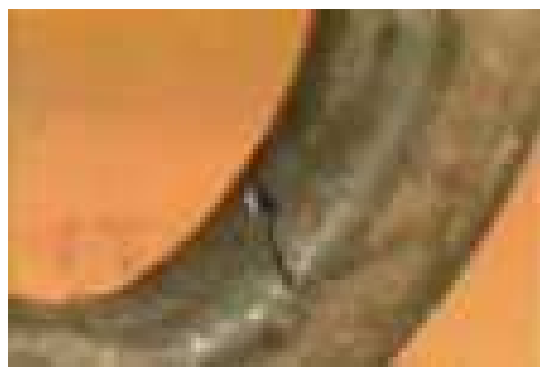


Photo 14



Photo 15



Photo 16