



PPE Checklist

Logical Laboratories

Complete

Score	80%	Flagged items	0	Actions	0
-------	-----	---------------	---	---------	---

Company Name

Logical Laboratories

Client / Site

Surry Hills Lab

Conducted on

14.03.2023 12:00 PST

Prepared by

Peter Morris

Location

65 Cooper St, Surry Hills NSW
2010, Australia

Nature of work

Laboratory (Chemical Handling)

Identify potential hazards at work (select all that apply)

- Eye
- Head/Neck/Face
- Hand
- Body/Torso
- Respiratory

EYE HAZARDS

100%

Handling/dispensing chemicals and ingredients; working around UV lights; chipping, sanding, grinding, welding, metal working; tasks that generate dust

Select all that apply for each hazard from the drop down list.

- Chemical Exposure
- Dust/Flying Debris
- Dust Particulates

Description of Hazard

Corrosive chemicals which is harmful when they explode

Required PPE

Safety glasses with side shields, chemical splash goggles

Does the equipment undergo testing and in a good condition?

Yes

Goggle are in good working condition. Lenses are clean without any debris or dirt for clear vision

Does the equipment fit perfectly?

Yes

They fit perfectly on cheeks and forehead



Photo 1

HEAD/NECK/FACE HAZARDS

100%

Handling/dispensing chemicals and ingredients, chipping, sanding or grinding metal or wood; working below others, working on energized equipment, working in confined spaces

Select all that apply for each hazard from the drop down list.

Chemical Exposure

Dust/Flying Debris

Dust Particulates

UV/IR Radiation

Description of Hazard

Dispensing chemicals, spills

Required PPE

Full face shields

Does the equipment undergo testing and in a good condition?

Yes

Face shields have no dents and marks

Does the equipment fit perfectly?

Yes

HAND HAZARDS

50%

Handling/dispensing chemicals and ingredients; exposure to abrasive materials; using knives or other sharp objects; working with hot or cold materials; food service prep

Select all that apply for each hazard from the drop down list.

Chemical Exposure

High Heat/COLD

Puncture

Description of Hazard

Handling chemicals specially those with high temperatures

Required PPE

Protective gloves, full arm length rubber gloves, thermal gloves

Does the equipment undergo testing and in a good condition?

No

Using broken gloves increase risk of burns and chemical reaction on hands. Make sure to change used gloves regularly.

Take a photo

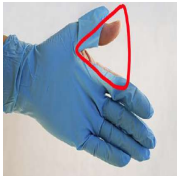


Photo 2

REFERENCE: Gloves are resistant to chemicals
[This is an example of how you can use iAuditor to include best practice reference images in your templates to assist with inspections]



Does the equipment fit perfectly?

Yes

BODY/TORSO HAZARDS

50%

Handling/dispensing chemicals or ingredients; exposure to abrasive materials; cutting, brazing, welding, chipping or sanding; working around electrical panels

Select all that apply for each hazard from the drop down list.

Chemical Exposure

Dust Particulates

Description of Hazard

Risk of burns and exposure of skin to chemical stains and contamination

Required PPE

Lab coats, full length lab apron

Does the equipment undergo testing and in a good condition?

No

We saw dirty lab coats. Ensure that lab coats must be clean and free from stains because the chemicals might cause harm to other people getting in contact with it.

Also, This lab coat is cluttering the bench. It could be a potential fire hazard or become contaminated with a hazardous substance.

Take a photo

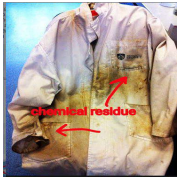


Photo 3



Photo 4

Does the equipment fit perfectly?

Yes

RESPIRATORY HAZARDS

100%

Handling/using highly hazardous chemicals; tasks that generate dust and/or fumes; cutting, brazing on certain metals (stainless steel);

Select all that apply for each hazard from the drop down list.

Chemical Exposure

Dust Particulates

Dust/Flying Debris

Description of Hazard

Exposure to dangerous vapors

Required PPE

Respirators

Does the equipment undergo testing and in a good condition?

Yes

Does the equipment fit perfectly?

Yes

It fits perfectly. Straps are tight



Photo 5

RECOMMENDATION

State recommendations here

1. Wear long pants and closed shoes.
2. Remove jewelry before entering the lab.
3. Tie back long hair.
4. Bring only the important things you need.
5. Leave personal items like bags, jackets or purses outside to avoid contamination.

6. Use gloves which are resistant to chemicals being handled. Change your gloves and wash your hands frequently.
 7. Always button your coat
 8. Use the apron when you are working with splash chemicals and reactive solutions.
 9. Use thermal gloves when handling equipment with extreme temperatures.
 10. Only use a respirator after undergoing proper training. Ask lab manager for the training.
 11. Always remove PPE and wash your hands before leaving the lab because you can spread biological contamination like using your phones inside while wearing your gloves on.
-

COMPLETION

Auditor's Full Name and Signature



Peter Morris
14.03.2023 12:50 PST

Appendix



Photo 1

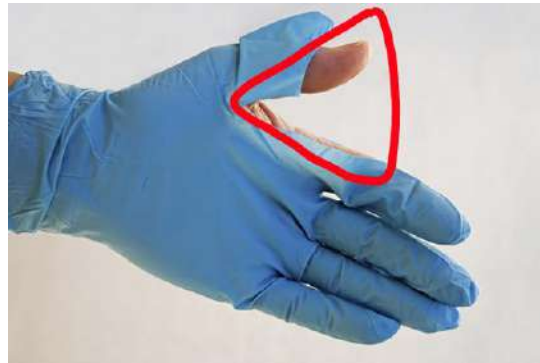


Photo 2



Photo 3



Photo 4



Photo 5