



Plant Risk Assessment Template

Smelting Ores / 9 Jun 2023 / John S T

Complete

Score	62.5%	Flagged items	0	Actions	0
Site name	Smelting Ores				
Conducted on	09.06.2023 15:30 PST				
Prepared by	John S T				
Location	Phillips Run Rd, Summersville, WV 26651, USA				

Plant Information

100%

Plant Item

Foundry casting

Plant Identification Details (Model/ Make/ Serial)

GOT1442019

Plant Owner Name

Dany T. T.

Plant task description

Use of foundry casting at new facility

Is the plant designed to perform the task?

Yes

Is the plant in good working condition and free of weeds and mud?

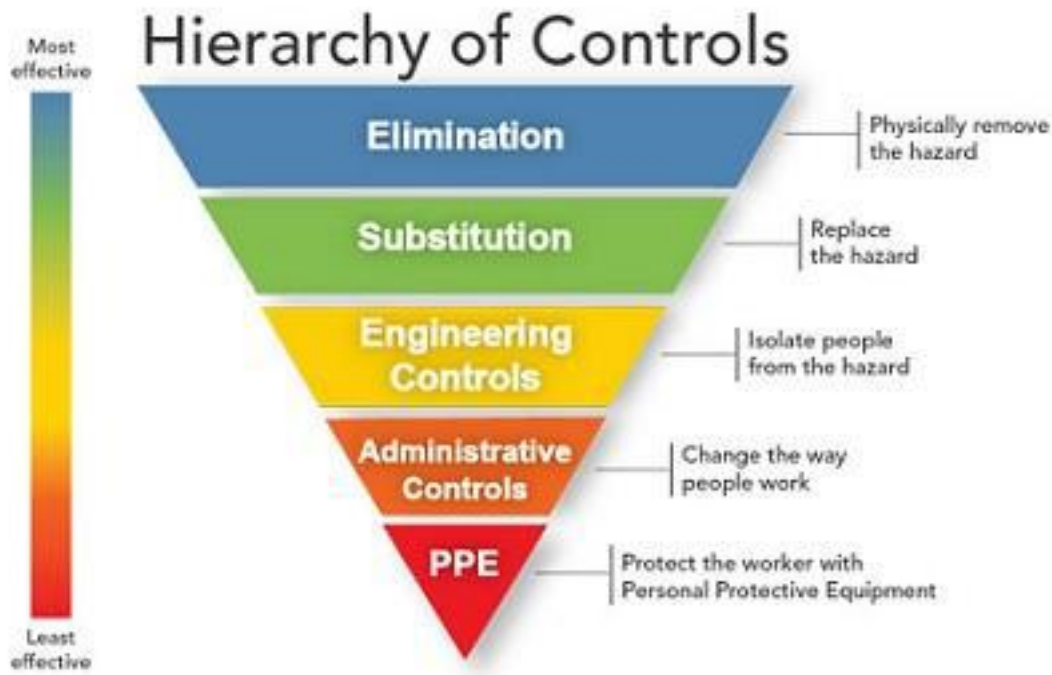
Yes

References

Risk Matrix Reference

Risk Matrix

Likelihood		Very Likely	Likely	Unlikely	Highly Unlikely
Consequences	Fatality	High	High	High	Medium
	Major Injuries	High	High	Medium	Medium
	Minor Injuries	High	Medium	Medium	Low
	Negligible Injuries	Medium	Medium	Low	Low



Explosion/Fire

0%

Can anyone be injured by an explosion of gas, vapours, liquids, dusts or other substances, triggered by plant operation?

Yes

Hazard

Activity

Monitoring metal casting

Description of hazards identified

molten metal, and sparks

Photo of hazard (optional)



Photo 1

Persons at risk

Supervisor

Initial risk rating

Initial consequence	Fatality
Initial likelihood	Likely
Initial risk rating	Medium

Residual risk rating

Residual consequence	Minor Injuries
Residual likelihood	Highly Unlikely
Residual risk rating	Low

Controls

Select control measures	Engineering Controls
	PPE

Enter description of control measures

Increase distance from viewing desk and proper use of PPE.

Suffocation

0%

Can anyone be suffocated due to lack of oxygen or atmospheric contamination?

Yes

Hazard

Activity

Smelting

Description of hazards identified

Fumes from smelting activity

Photo of hazard (optional)

Persons at risk

All workers on production floor

Initial risk rating

Initial consequence	Major Injuries
Initial likelihood	Unlikely
Initial risk rating	Medium

Residual risk rating

Residual consequence	Negligible Injuries
Residual likelihood	Highly Unlikely
Residual risk rating	Low

Controls

Select control measures	Elimination
--------------------------------	-------------

Enter description of control measures

Improved ventilation by increasing capacity of exhaust

Pressurized Content

100%

Can anyone be injured by fluids or gases under high pressure due to plant failure or misuse?

No

Electricity Contact

0%

Can anyone be injured by electrical shock or burnt due to damaged or poorly maintained leads, switches or equipment?

Yes

Hazard

Activity

Use of controls

Description of hazards identified

Exposed wires

Photo of hazard (optional)

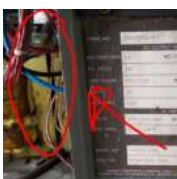


Photo 2

Persons at risk

Machine operator

Initial risk rating

Initial consequence

Minor Injuries

Initial likelihood

Initial risk rating

Medium

Residual risk rating

Residual consequence

Negligible Injuries

Residual likelihood

Highly Unlikely

Residual risk rating

Low

Controls

Select control measures

Substitution

PPE

Enter description of control measures

Replaced the wiring and constant use of PPE

Cutting

100%

Can anyone be cut, stabbed or punctured by coming in contact with moving plant or parts?

No

Crushing

100%

Can anyone be crushed due to falling, uncontrolled or unexpected movement of plant or its load?

No

Entanglement

100%

Can anyone's hair, clothing, gloves, necktie, jewellery, rags and other materials become entangled with moving parts of plant, or materials in motion?

No

Slips, Trips, Falls

0%

Can anyone slip, trip, or fall due to:
• uneven, slippery, or steep surfaces,
• obstacles or poor housekeeping
• ladders, stairs, platforms, or lack of guardrails

Yes

Hazard

Activity

Going to the second floor via east entrance

Description of hazards identified

Missing railing

Photo of hazard (optional)

Persons at risk

All employees

Initial risk rating

Initial consequence

Major Injuries

Initial likelihood

Unlikely

Initial risk rating

Medium

Residual risk rating

Residual consequence

Negligible Injuries

Residual likelihood

Highly Unlikely

Residual risk rating

Low

Controls

Select control measures

Elimination

Enter description of control measures

Installed the railing

Ergonomics

100%

Can anyone be injured due to poorly designed work area, repetitive body movement, poor light placing, or other ergonomic issues?

No

Radiation

100%

Can anyone in the plant's vicinity suffer injury or illness due to exposure to radiation in the form of infra-red, ultra violet light, or microwaves?

No

Noise

0%

Can anyone in the plant's vicinity suffer injury or illness due to exposure to noise?

Yes

Hazard

Activity

Working within the facility

Description of hazards identified

Noise at the facility

Photo of hazard (optional)

Persons at risk

Employees at production floor

Initial risk rating

Initial consequence

Major Injuries

Initial likelihood

Very Likely

Initial risk rating

Medium

Residual risk rating

Residual consequence

Negligible Injuries

Residual likelihood

Highly Unlikely

Residual risk rating

Low

Controls

Select control measures

Administrative Controls

PPE

Enter description of control measures

Admin staff are required to request for access if need to go to production floor. All employees cannot enter the production floor if not wearing PPE.

Vibration

0%

Can anyone in the plant's vicinity suffer injury or ill-health due to exposure to vibration?

Yes

Hazard

Activity

Working near molten metal

Description of hazards identified

Heat from the molten metal

Photo of hazard (optional)



Photo 3

Persons at risk

All employees at production floor

Initial risk rating

Initial consequence

Minor Injuries

Initial likelihood

Unlikely

Initial risk rating

Medium

Residual risk rating

Residual consequence

Negligible Injuries

Residual likelihood

Highly Unlikely

Residual risk rating

Low

Controls

Select control measures

Administrative Controls

Enter description of control measures

Training to reinforce proper distance from molten metals

Temperature/Moisture

100%

Can anyone be injured or suffer ill-health due to exposure to:

- high or low temperatures
- objects of high or low temperatures
- moisture

No

Other Risks

100%

Other risks that can cause injury or ill-health?

No

Completion

Recommendations

Continue to reinforce safety practices through trainings and visible signs.

Name and Signature



John S. T.
09.06.2023 15:52 PST

Media summary



Photo 1

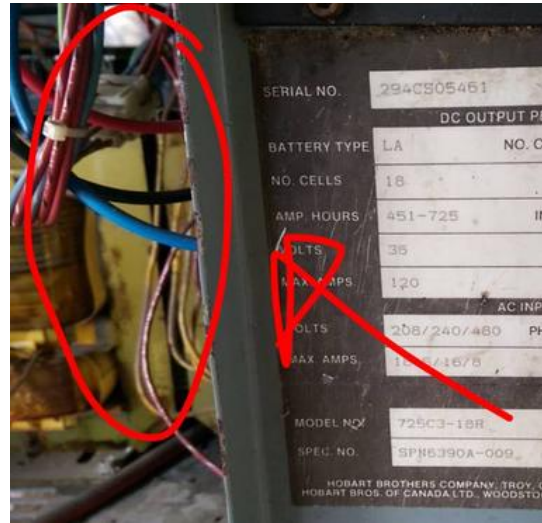


Photo 2



Photo 3