



# Product Evaluation Template

BO's Tires / Chloe Hughes / 09 Oct 2019

**Complete**

Score	<b>81.48%</b>	Flagged items	<b>5</b>	Actions	<b>0</b>
<b>Company</b>	BO's Tires				
<b>Conducted on</b>	9 Oct 2019 09:03 PST				
<b>Evaluated by</b>	Chloe Hughes				
<b>Location</b>	14452 SW Prairie Creek Rd, Rose Hill, KS 67133, USA				

## Flagged items

5 flagged

Inspection

### Product is free of damage

No

Noticed some bulges among the tires produced awhile ago



Photo 3



Photo 4

Inspection

### Product is free of deterioration

No

Inspected tire storage and observed a number of prematurely deteriorated tires.



Photo 5

Inspection

### Product is free of dirt/dust

No

Some of the tires in the storage are also found dirty and dusty and free of deterioration

Inspection

### Detailing is appropriately clear

No

Detailing is appropriate however some prints on tires are unclear



Photo 6

Inspection

### Overall, is the product in acceptable condition?

No

With the number of manufacturing issues identified in batch 1 of production and in previous batches, I'm marking this as unacceptable as it goes against all our product standards. Certain corrective measures must be implemented to reduce manufacturing defects. This product batch will not be released to market.

## Inspection

5 flagged, 81.48%

### Product Being Tested

Bo's Truck Tires

### Add Photo



Photo 1



Photo 2

## Visual

3 flagged, 25%

### Product is free of damage

No

Noticed some bulges among the tires produced awhile ago



Photo 3

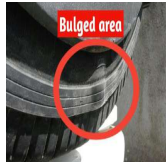


Photo 4

### Product is free of water damage

Yes

### Product is free of deterioration

No

Inspected tire storage and observed a number of prematurely deteriorated tires.



Photo 5

### Product is free of dirt/dust

No

Some of the tires in the storage are also found dirty and dusty and free of deterioration

## Size

100%

### Product follows standard size


Yes

### Product is free of deformities

Yes

## Color

1 flagged, 75%

<b>Predominant colors are acceptable</b>	Yes
<b>Trim and minor colors are acceptable</b>	Yes
<b>Detailing is appropriately clear</b>	No
Detailing is appropriate however some prints on tires are unclear	
	
Photo 6	
<b>Print is free of smudges and defects</b>	Yes
<b>Weight</b>	100%
<b>Product weight is within the acceptable tolerance</b>	Yes
<b>Product's center of mass is within the acceptable tolerance</b>	Yes
<b>Material</b>	100%
<b>Product material is within the acceptable strength (e.g., not brittle)</b>	Yes
<b>Material is free of deformities</b>	Yes
<b>Material is free from impurities</b>	Yes
<b>Material is appropriately sealed</b>	Yes
<b>Operation</b>	100%
<b>Product functions according to its design</b>	Yes
<b>Product rotates, move and adjusts as expected</b>	Yes
<b>Product moves within safe ranges</b>	Yes
<b>Product does not make any unexpected or grinding noises</b>	Yes
<b>Packaging</b>	100%
<b>Packaging is free from deformities</b>	Yes
<b>Packaging is free of machine marks and scrapes</b>	Yes

Print on the packaging is free from smudges or discoloration

Yes

Print on packaging is clear

Yes

Padding is free of defects and deformities

Yes

Product fits securely into packaging

Yes

## Defect Log

0%

### Defect Log

#### Defect Log 1

Additional defect found

Tread Separation

#### Description of the defect

A manufacturing defect found on one of the tires in batch 1 of today's production.

#### Add photo of defect

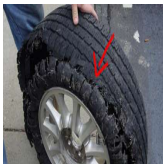


Photo 7

## Sign Off

1 flagged, 0%

Overall, is the product in acceptable condition?

No

With the number of manufacturing issues identified in batch 1 of production and in previous batches, I'm marking this as unacceptable as it goes against all our product standards. Certain corrective measures must be implemented to reduce manufacturing defects. This product batch will not be released to market.

#### Name & Signature of Auditor

A handwritten signature in black ink, appearing to be 'Chloe Hughes', written over a white background.

Chloe Hughes  
9 Oct 2019 11:33 PST

## Appendix



Photo 1



Photo 2



Photo 3



Photo 4



Photo 5



Photo 6



Photo 7