



Scaffolding Safety

Josheen Construction Agency / Julian Felipian / 11
May 2022 / Zach Daniels

Complete

Score	73.81%	Flagged items	10	Actions	1
-------	---------------	---------------	-----------	---------	----------

Client / Site

Josheen Construction Agency

Contractor

Julian Felipian

Scaffold Number

JCA-123

Conducted Date and Time

11.05.2022 15:38 PST

Inspected by

Zach Daniels

Location

5000 Estate Enighed,
Independence, KS 67301, USA

Flagged items & Actions

10 flagged, 1 action

Flagged items

10 flagged, 1 action

Scaffolding Safety Inspection / Base

Is the scaffold on a solid base?

No



Photo 2

Scaffolding Safety Inspection / Base

Does each stand have a base plate?

No

Missing base plate



Photo 3

Scaffolding Safety Inspection / Height

Are perimeter handrail height with a mid-rail around all work platforms according to regulatory requirements?

No

no handrails and mid-rails



Photo 4

To Do | Assignee carlo@josheen.com | Priority High | Due 18.05.2022 19:48 PST | Created by SafetyCulture Staff

no handrails and mid-rails
put mid-rails for this scaffold

Scaffolding Safety Inspection / Height

Are midrails installed approximately halfway between the top rail and the platform surface

No

no handrails and mid-rails

Scaffolding Safety Inspection / Platforms

Are the supports correctly and evenly distributed?

No

Supports are unevenly distributed



Photo 5

Scaffolding Safety Inspection / Bracing

Is the façade bracing fixed to the face of the scaffold at standard intervals?

No

too far intervals



Photo 6

Scaffolding Safety Inspection / Tubes and Fittings

Are the tubes and fittings used in good condition?

No

rustic fittings



Photo 7

Scaffolding Safety Inspection / Tubes and Fittings

Are all fittings tightened sufficiently?

No

loose fittings

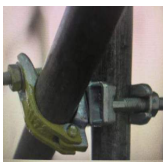


Photo 8

Scaffolding Safety Inspection / Scaffolds Tag

Have the inspections been written in and signed by the

No

authorized person?



no signature provided



Photo 9

Scaffolding Safety Inspection / Recommendation

Overall Ranking



Fixed on the failed response

Other actions

0 actions

General Information

Type of scaffolding

Steel

Description of work

Scaffolding will be used in construction of 20-story building

Take a photo of it



Photo 1

Base

2 flagged, 33.33%

Is the scaffold on a solid base?

No



Photo 2

REFERENCE: Good example of scaffold on a solid base
[This is an example of how you can use iAuditor to include best practice reference images in your templates to assist with inspections]



Does each stand have a base plate?

No

Missing base plate



Photo 3

Are sole plates of the correct dimension being used?

Yes

Height

2 flagged, 1 action, 60%

Are free-standing tower scaffold steadied with guy wire according to regulations requirements for its height?

Yes

Are safety cage needed around vertical ladder based on height according to regulatory requirements?

N/A

Are perimeter placed on work surfaces (toe board permanent and temporary height) according to regulatory requirements?

Yes

Are perimeter handrail height with a mid-rail around all work platforms according to regulatory requirements?

No

no handrails and mid-rails



Photo 4

To Do | Assignee carlo@josheen.com | Priority High | Due 18.05.2022 19:48 PST | Created by SafetyCulture Staff

no handrails and mid-rails
put mid-rails for this scaffold

Are rolling scaffold wheel brakes locked and outriggers extended to maintain maximum height of 3 times the smallest base dimension?

N/A

Are top rails based on height according to regulatory requirements?

Yes

Are midrails installed approximately halfway between the top rail and the platform surface

No

no handrails and mid-rails

Geometry

100%

Are the standards vertical?

Yes

Are the ledgers and transoms horizontal?

Yes

Are the joints in the standards staggered?

Yes

Are the joints in the ledgers staggered?

Yes

Are the transoms correctly spaced?

Yes

Platforms

1 flagged, 80%

Are the supports correctly and evenly distributed?

No

Supports are unevenly distributed



Photo 5

Are the overhang has the minimum standard size?

Yes

Does the board doesn't have creaky sound?

Yes

Are lapped boards safe?

Yes

Are boards secure?

Yes

Bracing

1 flagged, 50%

Is the ledger bracing fitted on alternate pairs of standards for the full height of the scaffold?

Yes

Is the façade bracing fixed to every lift?

Yes

Is the façade bracing fixed to the face of the scaffold at standard intervals?

No

too far intervals



Photo 6

Is the façade bracing set at standard angle

Tubes and Fittings

2 flagged, 50%

Are the tubes and fittings used in good condition?

No

rustic fittings



Photo 7

Have the correct couplers been used?

Yes

Are all fittings tightened sufficiently?

No

loose fittings

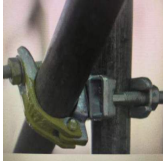


Photo 8

Are check couplers fitted as required?

Yes

Access

100%

Is access provided to the full height of the scaffold?

Yes

Is the ladders positioned at standard angle?

N/A

Is the head tied and the feet on a firm base?

Yes

Do ladders rise in standard height above platforms?

N/A

Loading

100%

Is the scaffold correct for its intended use?

Yes

proper usage of scaffold

Are loads on the scaffold evenly distributed?

Yes

Are stacked materials secure?

Yes

Ties

100%

Are sufficient ties used in accordance with safety regulation?

Yes

Are ties fixed with a double coupler?

Yes

Are ties fixed on both inner and outer ledgers or standards?

Yes

Guard Rails and Toe Boards

100%

Are the rails fixed at least 950mm above the platform?

Yes

Is the rail fixed a maximum of 470mm above the toe board?

Yes

Are toe boards fitted to all platforms and at least 150mm and secure?

Yes

Scaffolds Tag

1 flagged, 75%

Is the scaffolding tag displayed at the access point?

Yes

Has the front of the scaffolding tag been completed correctly?

Yes

Have the inspections been written in and signed by the authorized person?

No

no signature provided



Photo 9

Are the inspection frequencies in accordance with the standard regulations?

Yes

Recommendation

1 flagged, 0%

Overall Ranking

Fail

Fixed on the failed response

Recommended scaffolding tag

Yellow

Change the scaffold tag to yellow and fix the base of the scaffold

Recommendations or other requirements

- Make sure to use a stable base in building your scaffolding

- Evenly distribute the supports of your scaffold
 - Use the right ledger bracing that will pair up with your standard
 - Make sure to tighten all your fittings
 - Provide signature to complete up your scaffolding tags
-

Completion

Inspector's Name and Signature



Zach Daniels
11.05.2022 19:48 PST

Appendix



Photo 1



Photo 2



Photo 3



Photo 4



Photo 5



Photo 6

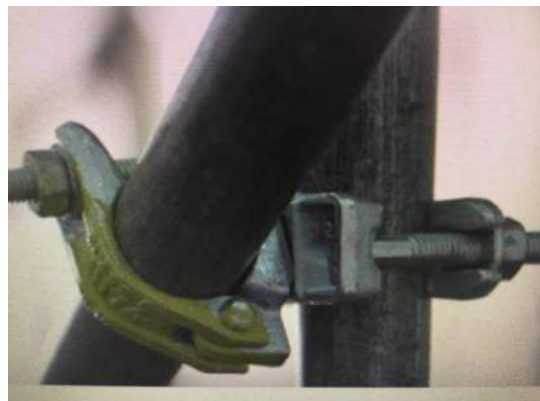


Photo 8



Photo 7



Photo 9