



# Construction Risk Assessment Form

21 Feb 2023 / 372-2345 / Jeremiah Ronson

Complete

Score	<b>81.82%</b>	Flagged items	<b>1</b>	Actions	<b>1</b>
-------	---------------	---------------	----------	---------	----------

**Site conducted**

Unanswered

**Job #**

372-2345

**Conducted on**

21.02.2023 09:00 PST

**Prepared by**

Jeremiah Ronson

**Location**

3516 Lakeland Park Drive,  
Milwaukee WI

**Proposed work description**

Construction of 2-story building as new retailer complex.

**Flagged items & Actions**

1 flagged, 1 action

**Flagged items**

1 flagged, 1 action

Audit / Working at Height

**Working at Height**

At Risk



Photo 1

To Do | Assignee SafetyCulture Staff | Priority Low | Due 28.02.2023 09:08 PST | Created by SafetyCulture Staff

Loose scaffolding on the west side of the building. Foreman was immediately informed. This problem should be fixed before the end of the day. Prohibit workers from working on or underneath loose scaffolding.

**Other actions**

0 actions

## Audit

1 flagged, 1 action, 81.82%

### Instructions

1. Answer "Safe", "At Risk", "N/A" for each of the hazards below
2. If "At Risk", follow the questions to identify the likelihood of occurrence, severity and risk rating
3. Include any notes and photos by clicking on the paperclip icon and then "Add Image"
4. Answer the relevant control questions
5. Complete the form by providing the relevant signatures

## Confined Space

100%

### Confined Space

Safe

## Working at Height

1 flagged, 1 action, 33.33%

### Working at Height

At Risk

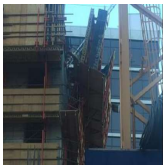


Photo 1

To Do | Assignee SafetyCulture Staff | Priority Low | Due 28.02.2023 09:08 PST | Created by SafetyCulture Staff

Loose scaffolding on the west side of the building. Foreman was immediately informed. This problem should be fixed before the end of the day. Prohibit workers from working on or underneath loose scaffolding.

#### Likelihood of occurrence

Likely to occur

Injury and/or fatality by being struck by objects or through possible falls are imminent unless scaffolding issues are fixed ASAP. Action already created.

#### Severity

Fatality/ Disability

In relation to the loose scaffolding detected in the previous entry.

#### Risk rating

High

#### Working at height permit received

No

#### Height safety harness worn

Yes

#### Enter description of control measures

All workers and personnel were cleared from the immediate vicinity of the loose scaffolding. A "restricted area" was established with barriers and tapes to ensure that no one would be in danger of falling objects from the loose scaffolding detected.

<b>Restricted Access</b>	100%
Restricted Access	Safe
<b>Electricity</b>	100%
Electricity	Safe
<b>Compressed Air</b>	
Compressed Air	N/A
<b>Uneven/slippery Surfaces</b>	100%
Uneven/slippery Surfaces	Safe
<b>Hazardous Gases</b>	100%
Hazardous Gases	Safe
<b>Asbestos</b>	100%
Asbestos	Safe
<b>Vehicular movement</b>	100%
Vehicular movement	Safe
<b>Dust &amp; Airborne particle's</b>	100%
Dust & Airborne particle's	Safe
<b>Working over/near water</b>	100%
Working over/near water	Safe
<b>Overhead hazards</b>	100%
Overhead hazards	Safe
<b>Manual handling</b>	100%
Manual handling	Safe

## Fire / Explosion

100%

Fire / Explosion

Safe

## Noise

100%

Noise

Safe

## UV

100%

UV

Safe

## Buried/Covered services

100%

Buried/Covered services

Safe

## Lone worker

100%

Lone worker

Safe

## Spills / Pollution

100%

Spills / Pollution

Safe

## Completion

0%

### Observations and recommendations

Standards, materials, and practices concerning scaffolding, working at heights, and falling objects must be reviewed. Loose scaffolding was detected in the west side of the building which had the potential to cause major injuries and fatalities.

Work completed

No

Equipment is safe & fit to operate

No

### Customer representative



Jordan Rank  
21.02.2023 09:10 PST

## Appendix



Photo 1