



Construction Toolbox Talks

Green Frog Construction / 5 Apr 2024 /
Elaina Stamm

Complete

Score	1 / 2 (50%)	Flagged items	1	Actions	1
--------------	-------------	----------------------	---	----------------	---

Client / Site

Green Frog Construction

Conducted on

05.04.2024 11:00 PST

Prepared by

Elaina Stamm

Location

225 26th St, Santa Monica, CA
90402, USA
(34.0474482, -118.4907134)

Flagged items & Actions

1 flagged, 1 action

Flagged items

1 flagged, 0 actions

Audit / Follow up questions

Is there any hazard happened during the shift?

Yes

Other actions

1 action

Audit / Follow up questions

What are those hazards?

Worker was struck by a steel beam while unloading the material onsite. No external bleeding occurred.



Photo 1

To do | Assignee: SafetyCulture Staff | Priority: High | Due: 08.08.2024 11:07 PST | Created by: SafetyCulture Staff

For Foreman - Inspect Unloading Hazards

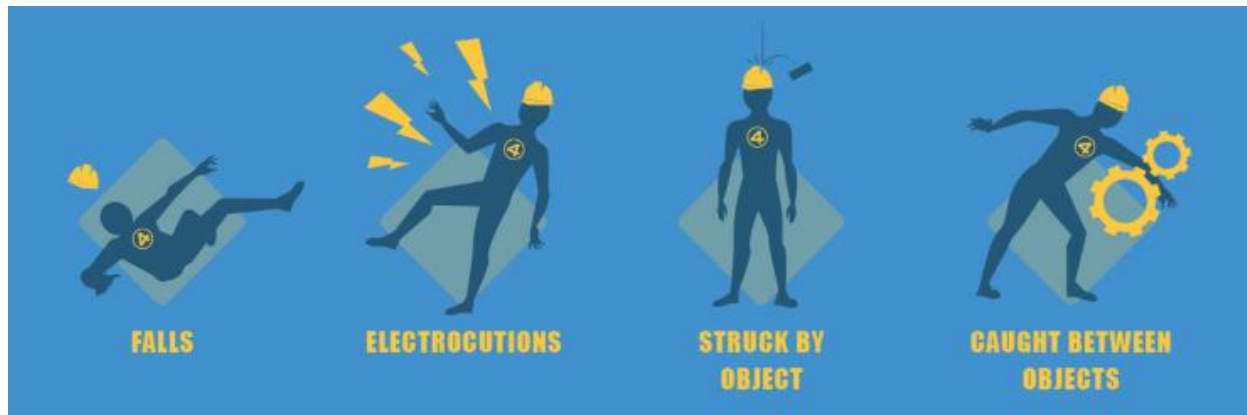
See description of hazard incident during the work shift.

General Information

Description of work to be performed

Unloading and carrying materials at construction sites. Then, prepare and apply construction materials to build structures or fill gaps.

Construction: Fatal Four Hazards Discussion

**FALLS:**

Falls are the number one cause of fatal injuries in construction. Listed below are the top causes of injuries and some prevention tips:

Top Causes:

1. Not wearing safety harnesses when working at heights
2. Falling from roofs
3. Falling to a lower level

Prevention Tips:

1. Use appropriate type of scaffolds
2. Correct use of ladder
3. Use fall protection equipment

ELECTROCUTIONS:

Electrocutions are serious injury caused by electric shock or current passing through the body. Listed below are the top causes of injuries and some prevention tips:

Top Causes:

1. Improper extension cord
2. Contact with energized sources
3. Contact with live power lines

Preventions Tips:

1. Conducts site inspections
2. Regular inspection of electrical gear
3. Proper inspection of equipment

STRUCK BY OBJECT:

Struck by object are produced by forcible contact or impact between person and an object or a piece of equipment. Listed below are the top causes of injuries and some prevention tips:

Top Causes:

- 1. Rolling objects
- 2. Falling objects
- 3. Flying objects

Preventions Tips:

- 1. Catch platforms to be used for tools
- 2. Inspect power tools for guards
- 3. Wear appropriate Personal Protective Equipment (PPE)

CAUGHT-IN BETWEEN:

Caught-in between objects are injuries resulting from a person being squeezed, caught, crushed or compressed between two or more objects. Listed below are the top causes of injuries and some prevention tips:

Top Causes:

- 1. Moving machinery and tools
- 2. Loose clothing getting caught
- 3. Overloading heavy equipment

Preventions Tips:

- 1. Wear seatbelts when working with machineries
- 2. Switch off equipment when not in used and use LOTO when maintaining machineries
- 3. Correct trenching

Follow up questions

1 flagged, 1 action, 1 / 2 (50%)

Is there any hazard happened during the shift?

Yes

What are those hazards?

Worker was struck by a steel beam while unloading the material onsite. No external bleeding occurred.

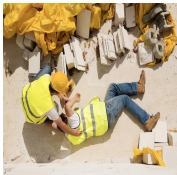


Photo 1

To do | Assignee: SafetyCulture Staff | Priority: High | Due: 08.08.2024 11:07 PST | Created by: SafetyCulture Staff

For Foreman - Inspect Unloading Hazards

See description of hazard incident during the work shift.

Any question or comment about Fatal Four Hazards?

No

Recommendations

Recommendations

Have more safety precautions in place when unloading heavy materials. Maybe consider implementing a buddy system when carrying heavy materials to reduce the risk of being struck by an object, as a partner

can spot for potential hazards and remind each other to be careful.

Completion

Competent Person (Full Name and Signature)

Elaina Stamm

Elaina Stamm
01.08.2024 11:09 PST

By signing this, you confirm that the information discussed during this meeting were fully understood.

Click + to add signee

Media summary



Photo 1