



Job Safety Analysis

James Carter / 15 Mar 2023

Complete

| Score | 0 / 0 (0%) | Flagged items | 0 | Actions | 0 |
|--------------|--|---------------|---|---------|---|
| Site | SC Construction Area | | | | |
| Conducted on | 15 Mar 2023 07:30 PST | | | | |
| Location | Googs Track, Yumbarra SA 5690, Australia | | | | |
| Prepared by | James Carter | | | | |

Job Safety Analysis (JSA)

Job Task Being Assessed

Job description

Scaffold Installation

Select job type

Other

Enter job type

Has high accident frequency

List employees being observed during JSA

- Robert Matthews
- Allan Bell
- Tim Greyson

Tasks, Hazards and Preventive Measures

- 1) Break a job down into smaller tasks and observe a worker performing it
- 2) Click + to add a "Job Step" and fill in the relevant information
- 3) Identify the potential hazards for each task
- 4) Determine preventive measures and controls to overcome these hazards

Job Step

Job Step 1

Enter job step description

Set the scaffold by obtaining mud sills or base plates. Build the base.

Potential risk or hazard identified while task is being performed (select all that apply)

Mechanical (Mechanical Failure, Stuck between objects)

Rate risk/ hazard before control measures

Low Risk

Take a photo of step/ activity (Optional)



Photo 1



Photo 2

Hazard Control Measures

Engineering Controls

Administrative Controls

Personal Protective Equipment

Engineering Controls

Check location for the condition of ground, obstructions, overhead wires and tie-in problems

Administrative Controls

Ensure that the transom are tightly inserted to the lowest V connectors.
Attach ledgers when holding standards in place.

Personal Protective Equipment

Use protective hand and footwear

Explanation of control measures

Job Step 2

Enter job step description

Attach casters and lock them

Potential risk or hazard identified while task is being performed (select all that apply)

Ergonomics (Strain, Sprains,
Human Error)

Mechanical (Mechanical Failure,
Stuck between objects)

Rate risk/ hazard before control measures

Moderate Risk

Take a photo of step/ activity (Optional)

Hazard Control Measures

Administrative Controls

Personal Protective Equipment

Administrative Controls

Conduct daily inspections of casters. It is very important to check if they are properly locked to avoid falls and slips.

Personal Protective Equipment

Use protective hand and footwear

Explanation of control measures

Job Step 3

Enter job step description

Assemble the frames of the scaffold

Potential risk or hazard identified while task is being performed (select all that apply)

Mechanical (Mechanical Failure,
Stuck between objects)

Struck by Objects

Rate risk/ hazard before control measures

Moderate Risk

Take a photo of step/ activity (Optional)



Photo 3

Hazard Control Measures

Administrative Controls

Personal Protective Equipment

Administrative Controls

Secure the frames by attaching them properly to the cross braces.
Check the dimensions if accurate.
Check if there are damages on the components of the equipment used like bent wedges.

Personal Protective Equipment

Use hard hats

Explanation of control measures

Job Step 4

Enter job step description

Move scaffold into the correct position

Potential risk or hazard identified while task is being performed (select all that apply)

Ergonomics (Strain, Sprains, Human Error)

Rate risk/ hazard before control measures

Low Risk

Take a photo of step/ activity (Optional)

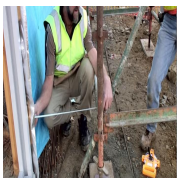


Photo 4

Hazard Control Measures

Administrative Controls

Administrative Controls

Ensure to move the scaffold with the right distance from the building.
If a bay needs to be moved, use a lever to adjust the structure rather than manually doing it.

Explanation of control measures

Job Step 5

Enter job step description

Fasten the planks into place

Potential risk or hazard identified while task is being performed (select all that apply)

Ergonomics (Strain, Sprains, Human Error)

Mechanical (Mechanical Failure, Stuck between objects)

Rate risk/ hazard before control measures

Moderate Risk

Take a photo of step/ activity (Optional)

Hazard Control Measures

Personal Protective Equipment

Personal Protective Equipment

Use protective clothing and equipment

Explanation of control measures

Job Step 6

Enter job step description

Set up the ladders

Potential risk or hazard identified while task is being performed (select all that apply)

Fall (Slip, Trip)

Mechanical (Mechanical Failure, Stuck between objects)

Rate risk/ hazard before control measures

Moderate Risk

Take a photo of step/ activity (Optional)



Photo 5

Hazard Control Measures

Administrative Controls

Administrative Controls

Secure the access to the scaffold by using ladders that are designed for a specific scaffold. For stair-like ladders, it must have treading.

Explanation of control measures

Job Step 7

Enter job step description

Put guardrails in place

Potential risk or hazard identified while task is being performed (select all that apply)

Fall (Slip, Trip)

Rate risk/ hazard before control measures

High Risk

Take a photo of step/ activity (Optional)



Photo 6

Hazard Control Measures

Administrative Controls

Personal Protective Equipment

Administrative Controls

Ensure that the main run and return are accurately tied up.
Conduct a fall protection equipment inspection.

Personal Protective Equipment

Use harness and visibility vests.
Check the condition of the safety strap. It should not be damaged not cut fibers are visible.

Explanation of control measures

Job Step 8

Enter job step description

Check the scaffold and install handrails

Potential risk or hazard identified while task is being performed (select all that apply)

Mechanical (Mechanical Failure,
Stuck between objects)

Rate risk/ hazard before control measures

Moderate Risk

Take a photo of step/ activity (Optional)



Photo 7

Hazard Control Measures

Administrative Controls

Administrative Controls

Make an inspection to make sure that all pieces are safe and secured. Also conduct a quick check before leaving the site.

Explanation of control measures

Recommendation from Health and Safety Committee

Recommendations

1. Make sure that all equipment are all in good condition.
2. Do not mix frames from different manufacturers.
3. Do not use concrete blocks or bricks as substitute for a proper base plates.
4. Never use ladders to increase height of scaffold.
5. Use proper equipment for guardrails and not the cross-braces.
6. Do not use frames when climbing to platforms.
7. Measure proper distance from the building where the scaffold is placed.
8. Check if the components are installed accurately and tightly.
9. The use of safety clothing and fall protection equipment must be observed to reduce risks of falling injuries.
10. Use buddy-up system.

Completion

Full Name and Signature of Inspector

James Carter
15 Mar 2023 08:32 PST

Full Name and Signature of Health and Safety Committee Member

Katherine Watson
15 Mar 2023 08:33 PST

Media summary



Photo 1



Photo 2



Photo 3



Photo 4



Photo 5



Photo 6



Photo 7