



Car Fluids Checklist

21 Jul 2025 / Arnulfo Friesen

Complete

Score	31 / 33 (93.94%)	Flagged items	9	Actions	4
Conducted on	21.07.2025				
Prepared by	Arnulfo Friesen				
Location	16497 E Alameda Pl, Aurora, CO 80017, USA (39.7123234, -104.7963143)				
Vehicle ID	TXR-4582				

Flagged items & Actions		9 flagged, 4 actions
Flagged items		9 flagged, 1 action
Car Fluids & Safety Systems Checklist / Fluid Level Check / Coolant		
What is the condition of the coolant?	Dirty	
Car Fluids & Safety Systems Checklist / Fluid Level Check / Brake Fluid		
What is the brake fluid level?	Low	
Car Fluids & Safety Systems Checklist / Fluid Level Check / Power Steering Fluid		
What is the power steering fluid level?	Low	
Car Fluids & Safety Systems Checklist / Fluid Level Check / Power Steering Fluid		
What is the condition of the power steering fluid?	Dirty	
Car Fluids & Safety Systems Checklist / Fluid Level Check / Windshield Washer Fluid		
What is the windshield washer fluid level?	Low	
Car Fluids & Safety Systems Checklist / Fluid Level Check / Windshield Washer Fluid		
What is the condition of the windshield washer fluid?	Cloudy	
Car Fluids & Safety Systems Checklist / Brake System Inspection		
Is the brake pedal functioning normally?	Fail	
Slight delay before engagement, may require bleeding.		
To do Priority: High Due: 22.07.2025 12:00 PST Created by: SafetyCulture Staff		
Fix break pedal.		
Norwich, please fix break pedal.		
Car Fluids & Safety Systems Checklist / Record & Report Issues / Record & Report Issues 1		
What is the severity level?	High	
Car Fluids & Safety Systems Checklist / Record & Report Issues / Record & Report Issues 3		
Should it be escalated to a supervisor?	No	
Other actions		3 actions
Car Fluids & Safety Systems Checklist / Brake System Inspection		
Is the brake pad thickness acceptable?	Needs Attention	
Front pads at warning level		



Photo 1

To do | Priority: High | Due: 01.08.2025 12:00 PST | Created by: SafetyCulture Staff

Replace brakepads

Hi Norwich, please ensure the replacement of the front pad. Thanks.

Car Fluids & Safety Systems Checklist / Tire Inspection / Front Right Tire

Is the tire in good visual condition?

Fail

Small sidewall crack detected

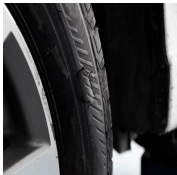


Photo 2

To do | Priority: High | Due: 01.08.2025 14:09 PST | Created by: SafetyCulture Staff

Replace tire

Hi Norwich, please replace tire. If there's no existing spare tire at the moment, kindly coordinate with procurement.

Car Fluids & Safety Systems Checklist / Inspection Summary

What is the overall vehicle status?

Requires Follow-up Maintenance

To do | Priority: High | Due: 30.07.2025 10:00 PST | Created by: SafetyCulture Staff

Ensure completion of assigned actions.

Hi Chris, please ensure that all issues are resolved. Thanks

Car Fluids & Safety Systems Checklist

9 flagged, 4 actions, 31 / 33 (93.94%)

Fluid Level Check

6 flagged, 16 / 16 (100%)

Check fluid levels and conditions. Log current level and condition. Top up if necessary and note action.

Engine Oil

3 / 3 (100%)

What is the engine oil level?

Half

Has the engine oil been topped up?

Yes

What is the condition of the engine oil?

Clean

Coolant

1 flagged, 2 / 2 (100%)

What is the coolant level?

Full

What is the condition of the coolant?

Dirty

Brake Fluid

1 flagged, 3 / 3 (100%)

What is the brake fluid level?

Low

Has the brake fluid been topped up?

Yes

What is the condition of the brake fluid?

Clean

Transmission Fluid

2 / 2 (100%)

What is the transmission fluid level?

Full

What is the condition of the transmission fluid?

Clean

Power Steering Fluid

2 flagged, 3 / 3 (100%)

What is the power steering fluid level?

Low

Has the power steering fluid been topped up?

Yes

What is the condition of the power steering fluid?

Dirty

Windshield Washer Fluid

2 flagged, 3 / 3 (100%)

What is the windshield washer fluid level?

Low

Has the windshield washer fluid level been topped up?

Yes

What is the condition of the windshield washer fluid?

Cloudy

Brake System Inspection

1 flagged, 2 actions, 3 / 3 (100%)

Visually inspect the brake system for signs of wear, leaks, or operational issues. Upload photo evidence of brake pads and discs.

Is the brake pad thickness acceptable?

Needs Attention

Front pads at warning level

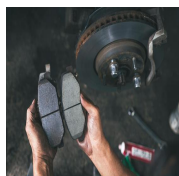


Photo 1

To do | Priority: High | Due: 01.08.2025 12:00 PST | Created by: SafetyCulture Staff

Replace breakpads

Hi Norwich, please ensure the replacement of the front pad. Thanks.

Are the brake discs free from cracks or damage?

Yes

Is the brake pedal functioning normally?

Fail

Slight delay before engagement, may require bleeding.

To do | Priority: High | Due: 22.07.2025 12:00 PST | Created by: SafetyCulture Staff

Fix break pedal.

Norwich, please fix break pedal.

Tire Inspection

1 action, 4 / 4 (100%)

Inspect tire pressure, tread depth, and visible damage. Enter pressure and upload photo evidence.

Front Left Tire

1 / 1 (100%)

What is the tire pressure?

32 PSI

[tire pressure evidence.pdf](#)


What is the tread depth?

4.5 mm

[tread depth evidence.pdf](#)

Is the tire in good visual condition?

Yes

Front Right Tire	1 action, 1 / 1 (100%)
What is the tire pressure? tire pressure evidence.pdf	32 PSI
What is the tread depth?	3 mm
Is the tire in good visual condition? Small sidewall crack detected  Photo 2	Fail
To do Priority: High Due: 01.08.2025 14:09 PST Created by: SafetyCulture Staff	
Replace tire Hi Norwich, please replace tire. If there's no existing spare tire at the moment, kindly coordinate with procurement.	
Rear Left Tire	1 / 1 (100%)
What is the tire pressure? tire pressure evidence.pdf	31 PSI
What is the tread depth? tread depth evidence.pdf	5.2 mm
Is the tire in good visual condition?	Yes
Rear Right Tire	1 / 1 (100%)
What is the tire pressure? tire pressure evidence.pdf	30 PSI
What is the tread depth? tread depth evidence.pdf	3.8 mm
Is the tire in good visual condition?	Yes
Record & Report Issues	2 flagged, 8 / 9 (88.89%)
Record & Report Issues 1	1 flagged, 3 / 3 (100%)

Record any defects, concerns, or maintenance actions, marking safety-critical issues for escalation.

Note: Log only one issue per text box and leave the section blank if there are no issues.

Issue Description:

Brake pedal response delayed – may indicate air in brake lines

What is the severity level?

High

Are there any corrective actions made?

Yes

What is the immediate action taken?

Scheduled brake bleed and inspection

Should it be escalated to a supervisor?

Yes

Record & Report Issues 2

3 / 3 (100%)

Record any defects, concerns, or maintenance actions, marking safety-critical issues for escalation.

Note: Log only one issue per text box and leave the section blank if there are no issues.

Issue Description:

Front right tire shows minor sidewall damage

What is the severity level?

Medium

Are there any corrective actions made?

Yes

What is the immediate action taken?

Marked for replacement

Should it be escalated to a supervisor?

Yes

Record & Report Issues 3

1 flagged, 2 / 3 (66.67%)

Record any defects, concerns, or maintenance actions, marking safety-critical issues for escalation.

Note: Log only one issue per text box and leave the section blank if there are no issues.

Issue Description:

Power steering fluid dirty and low

What is the severity level?

Low

Are there any corrective actions made?

Yes

What is the immediate action taken?

Topped up fluid and scheduled flush

Should it be escalated to a supervisor?

No

Inspection Summary

1 action, 0 / 1 (0%)

What is the overall vehicle status?

Requires Follow-up Maintenance

To do | Priority: High | Due: 30.07.2025 10:00 PST | Created by: SafetyCulture Staff

Ensure completion of assigned actions.

Hi Chris, please ensure that all issues are resolved. Thanks

Any additional notes or observations?

Here are a few notes:

Brake system needs urgent attention
Tire to be monitored closely
Coolant and power steering systems to be flushed.

Inspector's Signature:

Arnulfo Friesen

Arnulfo Friesen
25.07.2025 14:17 PST

Supervisor's Signature (if applicable):

Mayra Jast

Mayra Jast
25.07.2025 14:18 PST

Media summary



Photo 1



Photo 2

File summary

[tire pressure evidence.pdf](#)

[tread depth evidence.pdf](#)

[tire pressure evidence.pdf](#)

[tire pressure evidence.pdf](#)

[tread depth evidence.pdf](#)

[tire pressure evidence.pdf](#)

[tread depth evidence.pdf](#)