



Factory Visit Report

30 Jun 2025 / Janelle Kovacek

Complete

Score	0 / 0 (0%)	Flagged items	0	Actions	1
-------	------------	---------------	---	---------	---

Prepared By

Janelle Kovacek

Location

1875 E Palmer-Wasilla Hwy,
Wasilla, AK 99654, USA
(61.5796794, -149.4037274)

Date

30.06.2025 10:31 PST

Actions

1 action

Factory Operations & General Observations

Machinery & Equipment Status

Partially Operational



Photo 1

To do | Priority: High | Due: 02.07.2025 12:00 PST | Created by: SafetyCulture Staff

Fouling on the Heat Exchanger

Hi Norwich, please remove the fouling on the surface of the heat exchanger. Coordinate with the admin and procurement team should you need to replace parts. Thank you

Visit Overview

Purpose of Visit

Quality Inspection

Health & Safety Audit

Visit Type

Scheduled

Factory Representative

Vito Kuhlman

Vito Kuhlman
07.07.2025 10:36 PST

Factory Operations & General Observations

1 action

Production Areas Visited

Production Floor

Raw Material Storage

Machinery & Equipment Status

Partially Operational



Photo 1

To do | Priority: High | Due: 02.07.2025 12:00 PST | Created by: SafetyCulture Staff

Fouling on the Heat Exchanger

Hi Norwich, please remove the fouling on the surface of the heat exchanger. Coordinate with the admin and procurement team should you need to replace parts. Thank you

General Cleanliness

Good

No issues with general cleanliness. There's just clutter near the exit of the production area.

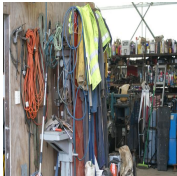


Photo 2

Workflow Efficiency

Minor Delays

This is caused by the partially operating heat exchanger.

Safety, Compliance & Quality	
PPE Usage	Always Used
Emergency Exits	Partially Obstructed
Compliance with Local Regulations	Fully Compliant
Quality Control Procedures in Place	Yes

Key Observations & Recommendations

Top Strengths, Areas of Concern, and Suggestions

Please see attached file for the detailed observation and suggestion.

[Factory Visit Observations and Recommendations.pdf](#)

Schedule of Next Visit

14.07.2025 09:00 PST

Sign-off

Inspector's Name and Signature

Janelle Kovacek

Janelle Kovacek
07.07.2025 10:50 PST

Report Reviewed By

Janet Hickie

Janet Hickie
07.07.2025 10:51 PST

Reviewer Feedback

See my suggestions in the attached file

[Factory Visit \(Reviewer Feedback\).pdf](#)

Media summary



Photo 1

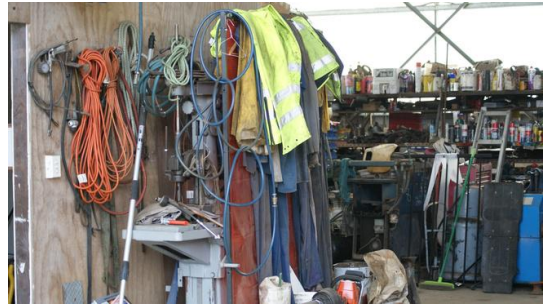


Photo 2

File summary

[Factory Visit Observations and Recommendations.pdf](#)

[Factory Visit \(Reviewer Feedback\).pdf](#)