



Visual Inspection Report Form

30 Jun 2025 / Asia Farrell / Packaging

Complete

Score	0 / 0 (0%)	Flagged items	1	Actions	0
Company					
De Vere Enterprises					
Department					
Packaging					
Address					
Santa Monica, CA, USA (34.0118828, -118.4915504)					
Prepared by					
Asia Farrell					
Conducted on					
30.06.2025 17:00 PST					

Flagged items

1 flagged

Inspection / Visual Inspection Report Form / Part / Part 1

Defect Criteria

Fail

Inspection

1 flagged

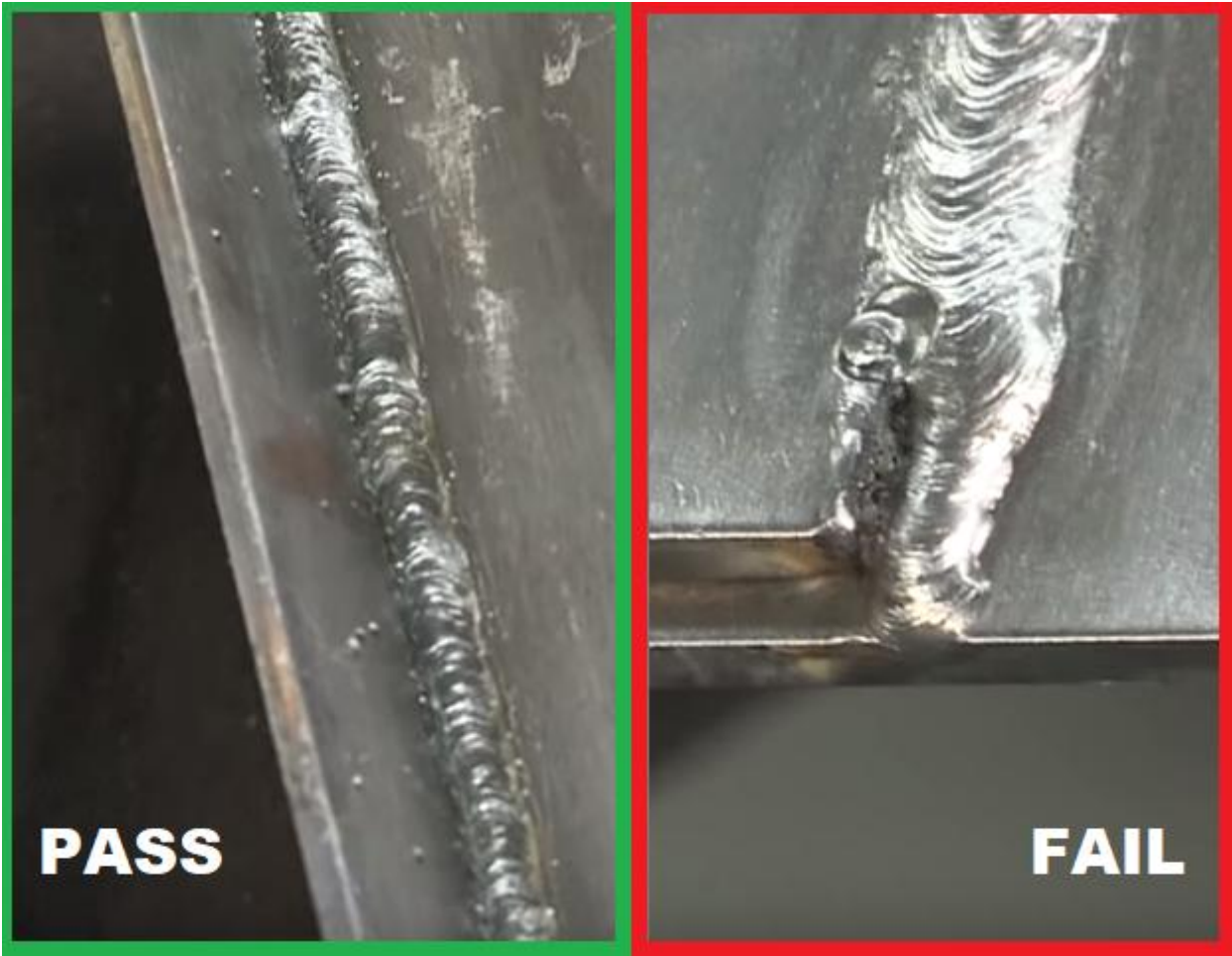
Visual Inspection Report Form

1 flagged

Instructions:

- 1. List all the parts to be visually inspected by tapping "Add Part"
- 2. Indicate its ID and location and take/attach photos of the part.
- 3. Select pass or fail based on the part's defect criteria below:

(This is an example of how you can use iAuditor to include best practice reference images in your templates to assist with inspections.)



- 4. For parts with visual defects, choose from the dropdown menu the exact failed item/s based on defect criteria.
- 5. You may put additional observations, then digitally place your signature to finish the visual inspection.

Part

1 flagged

Part 1

1 flagged

ID & Location

Item 8569AB

Take/attach photos



Photo 1

Defect Criteria

Fail

Identify visual defect/s.

Cracks

Metal is also scorched

Completion

Additional Observations

Item is the only defective one in the production batch.

Quality Assurance Inspector Name & Signature

Asia Ferrell

Asia Ferrell
04.07.2025 11:58 PST

Media summary



Photo 1