



## Production Line Setup Checklist

28 Jul 2025 / Antonetta Abernathy

Complete

Score	40 / 42 (95.24%)	Flagged items	2	Actions	1
Conducted on	28.07.2025				
Prepared by	Antonetta Abernathy				
Location	5320 Power Inn Rd, Sacramento, CA 95820, USA (38.5271389, -121.4103087)				

Flagged items & Actions

2 flagged, 1 action

Flagged items

2 flagged, 1 action

Production Line Setup / Equipment Inspection

Are all key components running efficiently?

No

No, not yet. The hydraulic press in Assembly Line B (model HPX-3400) is currently down due to a pressure calibration issue.

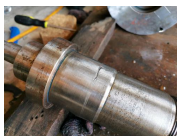


Photo 1

**To do** | Assignee: SafetyCulture Staff | Priority: High | Due: 25.08.2025 09:02 PST | Created by: SafetyCulture Staff

Call the maintenance team ASAP

get this press fixed by the end of the week

Production Line Setup / Data Analytics

Are there measures in place to continuously monitor the production line during regular operations?

No

One should be present for the next inspection

Other actions

0 actions

<b>Production Line Setup</b>	2 flagged, 1 action, 39 / 41 (95.12%)
Production Line Layout	4 / 4 (100%)
Is the production line layout designed to optimize space and improve flow?	Yes
Have potential bottlenecks been identified and addressed in the layout?	Yes
Are workstations positioned to minimize unnecessary movement and improve efficiency?	Yes
Have ergonomic considerations been made for worker comfort and safety?	Yes
Equipment and Safety Readiness	11 / 11 (100%)
Are all required PPE being worn by operators?	Yes
Are all PPE available?	Yes
Are all PPE functional?	Yes
Has all the equipment been inspected for operational readiness?	Yes
Has all the equipment been cleaned and free from debris for operational readiness?	Yes
Is all the equipment properly calibrated?	Yes
Are all safety guards, emergency stops, and safety devices functional?	Yes
Are all safety guards, emergency stops, and safety devices in place?	Yes
Are spare parts for changeovers available to avoid delays?	Yes
Is the work area free of hazards?	Yes
Are emergency exits accessible?	Yes
Equipment Inspection	1 flagged, 1 action, 6 / 7 (85.71%)
Are all key components running efficiently?	No

No, not yet. The hydraulic press in Assembly Line B (model HPX-3400) is currently down due to a pressure calibration issue.



Photo 1

**To do** | Assignee: SafetyCulture Staff | Priority: High | Due: 25.08.2025 09:02 PST | Created by: SafetyCulture Staff

Call the maintenance team ASAP  
get this press fixed by the end of the week

Are the motors in good condition and functioning properly?	Yes
--	-----

Are the belts free from wear, cracks, or damage?	Yes
--	-----

Are the sensors operational?	Yes
------------------------------	-----

Are the sensors correctly calibrated?	Yes
---------------------------------------	-----

Are the conveyors free from obstructions?	Yes
---	-----

Are the conveyors running smoothly?	Yes
-------------------------------------	-----

Inventory Inspection	5 / 5 (100%)
----------------------	--------------

Are raw materials available?	Yes
------------------------------	-----

Are raw materials checked for quality?	Yes
--	-----

Are material storage areas organized?	Yes
---------------------------------------	-----

Are materials properly labeled?	Yes
---------------------------------	-----

Are inventory levels sufficient to meet production requirements?	Yes
--	-----

Documentation, Compliance, and Training	4 / 4 (100%)
---	--------------

Have the operating procedures and instructions been reviewed by all involved personnel?	Yes
---	-----

Are relevant standards and policies accessible to employees?	Yes
--	-----

Have the necessary permits, approvals, or certifications been obtained?	Yes
---	-----

Are training records up to date for all involved personnel?	Yes
---	-----

Communication, Coordination, and Monitoring	4 / 4 (100%)
---	--------------

<b>Have communication lines been established for reporting issues during startup?</b>	Yes
<b>Is the team aware of their roles and responsibilities for the startup process?</b>	Yes
<b>Have monitoring systems been set up to track performance during startup?</b>	Yes
<b>Is there an action plan for immediate corrective actions if issues arise?</b>	Yes
Data Analytics	1 flagged, 2 / 3 (66.67%)
<b>Are there measures in place to continuously monitor the production line during regular operations?</b>	No
One should be present for the next inspection	
<b>Are key performance indicators (KPIs) established and reviewed to assess process efficiency and optimization?</b>	Yes
<b>Is the production process currently free of any patterns or trends that indicate issues?</b>	Yes
Initial Quality Check and Follow-up	3 / 3 (100%)
<b>Has a quality control procedure been established for the initial production run?</b>	Yes
<b>Are inspection and testing equipment available for product quality checks?</b>	Yes
<b>Have follow-up actions been assigned to ensure continuous improvement?</b>	Yes

**Final Inspection Results**

1 / 1 (100%)

**Has a schedule been established for regular preventive maintenance of production line equipment?**

Yes

**When is the next preventive maintenance for the production line scheduled?**

01.09.2025

**Any additional notes or observations?**

Fix the hydraulic press before the next inspection.

**Inspector's Signature:**



Antonetta Abernathy  
24.07.2025 11:13 PST

**Supervisor's Signature (if applicable):**



Vilma Dare  
24.07.2025 11:14 PST

## Media summary



Photo 1